

Contact Details

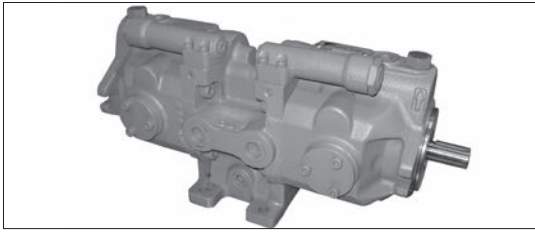
Before using the product, please check the guide pages at the front of this catalog.

Internet

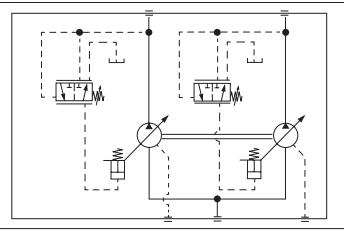
<https://www.daikinpmc.com/en/>

For latest information, PDF catalogs and operation manuals

V1515 series Dual Pump



JIS graphic symbols for hydraulic system



Nomenclature

V1515 A × × R - 95

1 2 3 4 5 6

1 Model No. (Applicable fluid: petroleum based hydraulic oil)

V1515: V1515 series dual pump
 Pump capacity: 14.8 cm³ × 2
 Not provided with a discharge rate adjusting screw

2 Control method

A: Pressure compensator control

3 Pump pressure adjustment range at end side

1: 0.8 to 7 MPa { 8 to 70 kgf/cm² }
 2: 1.5 to 14 MPa { 15 to 140 kgf/cm² }

4 Pump pressure adjustment range at shaft side

1: 0.8 to 7 MPa { 8 to 70 kgf/cm² }
 2: 1.5 to 14 MPa { 15 to 140 kgf/cm² }
 3: 3.5 to 21 MPa { 35 to 210 kgf/cm² }

5 Direction of rotation, when viewed from the shaft end

R: Clockwise (rightward)

6 Design No. (The design No. is subject to change)

Note: Risers are not provided with the pump. Order them separately as required by referring to the drawing below.

External dimension diagram

