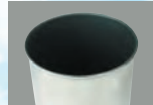


PAINT CUPS

Fluorine resin-Coated Cup 4G-TA

Improved flow and paint removal, making wash-up quick and easy.



▲ Fluorine resin - coated

Freely adjustable Cup 1G-2U, 4GF-U, 4GB-U, 4GPA-U, 4G-TA

A freely adjustable joint allows the cup to be adjusted to any angle while mounted on the gun.

A convenient gun stand makes it possible to temporarily stop work or add paint wherever a flat surface is available.



▲ Freely adjustable joint

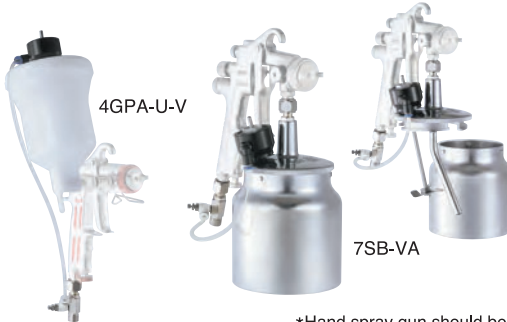


◀ Gun stand

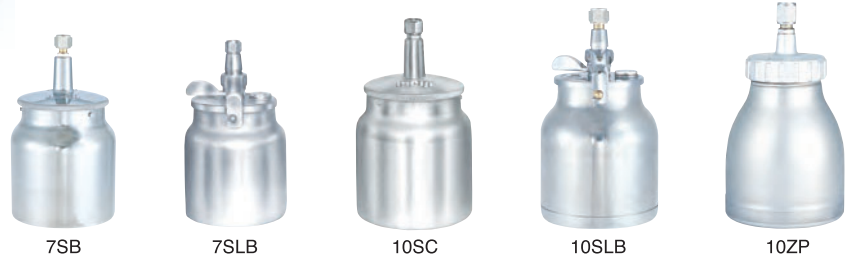
Agitator Cup 4GPA-U-V, 7SB-VA

Ideal for agitating pearl and metallic paint.

It is possible to agitate in low pressure and adjust the rotation freely.



*Hand spray gun should be ordered separately.



Model No.	Type	Capacity L(cc)	Coupling nut	Applicable spray guns	Weight g(lbs)(oz)
1G-2	Gravity cup	0.15(150)	G1/4	F55-GR, F55-G F110-G, F110L-G F-ZERO, FINER II PLUS FINER SPOT	90(0.198)(3.2)
1G-2U					101(0.222)(3.6)
2GD		113(0.249)(4.0)			
4GD		200(0.441)(7.1)			
4GF-U		185(0.408)(6.5)			
4GB-U		195(0.430)(6.9)			
4GPA-U	Plastic gravity cup	0.45(450)			170(0.375)(6.0)
4G-TA	Fluorine resin-coated gravity cup				220(0.485)(7.8)
6CP	Plastic gravity cup	0.6(600)	G3/8	F410-G	171(0.377)(6.0)
7SB	Suction cup	0.75(750)	G1/4	F110-S, F110L-S F-ZERO-S	290(0.639)(10.2)
10SB-2		1(1,000)	G3/8	F210-S, BS-2-11	325(0.717)(11.5)
10SC	Suction cup (lever type)	0.75(750)	G1/4	F110-S, F110L-S F-ZERO-S	360(0.794)(12.7)
7SLB			G3/8	F210-S, BS-2-11	420(0.926)(14.8)
10SLB		1(1,000)			
10ZP	Pressure cup	1(1,000)	G3/8	F210Z-P	590(1.300)(20.8)

Model No.	Type	Capacity L(cc)	Coupling nut	Air pressure MPa(PSI)	Air consumption L/min(cfm)	Paint viscosity range second	Applicable spray guns	Weight g(lbs)(oz)
4GPA-U-V	Agitator cup gravity	0.45(450)	G1/4	0.2(29)~0.35(51)	15(0.5)~50(1.8)	10~20	F110-G, F110L-G F-ZERO, FINER II PLUS	220(0.485)(7.8)
7SB-VA	Agitator cup suction	0.75(750)	G1/4	0.2(29)~0.35(51)	15(0.5)~50(1.8)	10~20	F110-S, F110L-S F-ZERO-S	380(0.838)(13.4)

● Paint viscosity is for using Meiji model V-1 viscosity cup.

PAINT FILTERS

Air hose and paint hose are connected close at hand to improve work efficiency. A built-in 100-mesh filter effectively filters the paint.



HF-C

Model No.	Filter mesh	Coupling nut	Applicable spray guns	Weight g(lbs)(oz)
HF-C	100	G 1/4	F110-P, F110L-P F-ZERO-P	130(0.287)(4.6)
HM-C	100	G 3/8	F210-P	150(0.331)(5.3)

VISCOSITY CUP

Use the Meiji V-1 viscosity cup, which is based on the No.4 Ford viscosity cup, to measure the viscosity of the paint.



V-1

Viscosity Comparison Table

Viscosity	Units										
	Pa·s	mPa·s (cps)	Ford Cup #3	Ford Cup #4	Meiji V-1 viscosity cup	Krebs Units Ku	Zahn #1	Zahn #2	Zahn #3	Zahn #4	Zahn #5
Low	0.01	10		5			30	16			
	0.015	15		8			34	17			
	0.02	20	12	10			37	18			
	0.025	25	15	12			41	19			
	0.03	30	19	14			44	20			
Medium	0.04	40	25	18			52	22			
	0.05	50	29	22	30		60	24			
	0.06	60	33	25	33		68	27			
	0.07	70	36	28	35			30			
	0.08	80	41	31	37			34			
High	0.09	90	45	32	38			37	10		
	0.1	100	50	34	40			41	12	10	
	0.12	120	58	41	43			49	14	11	
	0.14	140	66	45	46			58	16	13	
	0.16	160		50	48			66	18	14	
	0.18	180		54	50			74	20	16	
	0.2	200		58	52			82	23	17	10
	0.22	220		62	54				25	18	11
	0.24	240		65	56				27	20	12
	0.26	260		68	58				30	21	13
	0.28	280		70	59				32	22	14
	0.3	300		74	60				34	24	15

● 1Pa·s=10 poise. 1mPa·s=1 cps. 1Pa·s=1,000 cps