

Portable Magnetic Base Drilling Machine

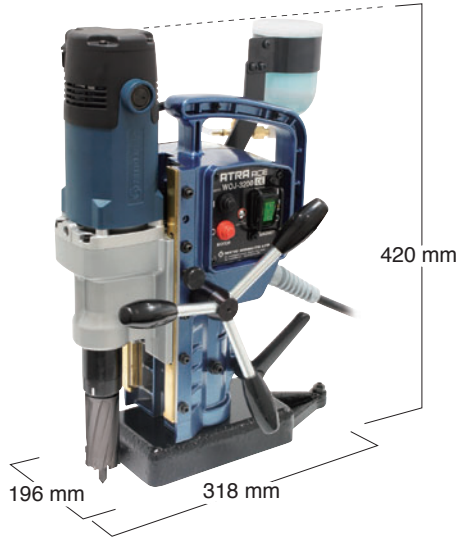
# ATRA ACE manual feed

*New generation magnetic base drilling machines help meet productivity and safety goals.*

- Advanced safety system

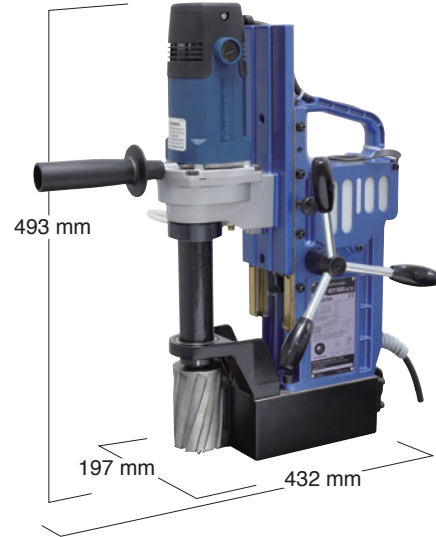
## Model WOJ-3200

- Max. 32 mm dia. x 50 mm deep



## Model AO-5575A

- Max. 55 mm dia. x 75 mm deep



### Specifications

Model		WOJ-3200		AO-5575A		
Power Source (Single Phase)		110 - 120 V AC, 50/60 Hz		220 - 240 V AC, 50/60 Hz		
Electric Drill	Rated Power Consumption	W	950		950	
	Rated Current	A	8.6	4.3	4.3	
	No-load Speed	min <sup>-1</sup> (rpm)	870		520	
Magnet Power Consumption		W	38	30	50	
Hole Capacity mm	Cutter		Hole Diameter	Plate Thickness	Hole Diameter	Plate Thickness
	One-touch Type JETBROACH 25L		12 to 17	9 to 25	12 to 17	9 to 25
	One-touch Type JETBROACH 35L		17.5 to 32	9 to 35	17.5 to 40	9 to 35
	One-touch Type JETBROACH 50L		12 to 32	9 to 50	12 to 55	9 to 50
	One-touch Type JETBROACH 75L		-	-	17.5 to 55	9 to 75
	One-touch Type HI-BROACH 25L		-	-	12 to 50	9 to 25
	One-touch Type HI-BROACH 50L		-	-	12 to 50	9 to 50
Twist Drill			Max. 13 mm dia.		-	-
Max. Stroke		mm	130		105	
Magnet Holding Power		N(kgf)	9000 (918)		10000 (1020)	
Magnet Dimensions		mm	99 x 177		86 x 170	
Power Cord Length		m	3		3	
Mass (Weight)		kg	13		17.5	
Accessories Included			<ul style="list-style-type: none"> <li>• Carry Case</li> <li>• Oil Tank</li> <li>• Pilot Pin 08035</li> <li>• Sub Handle</li> <li>• 2 pieces of Hex. Socket Head Bolt 5 x 10 mm</li> <li>• 3 pieces of Rod Handle</li> </ul>	<ul style="list-style-type: none"> <li>• 3 mm Hex. Socket Screw Key</li> <li>• 4 mm Hex. Socket Screw Key</li> <li>• 6 mm Hex. Socket Screw Key</li> <li>• 8 x 10 mm Spanner</li> <li>• Guard</li> <li>• Safety Strap</li> </ul>	<ul style="list-style-type: none"> <li>• Carry Case</li> <li>• Cutting Oil 0.5L</li> <li>• Pilot Pin 08050</li> <li>• Side Handle</li> <li>• 3 mm Hex. Socket Screw Key</li> </ul>	<ul style="list-style-type: none"> <li>• 5 mm Hex. Socket Screw Key</li> <li>• 8 x 10 mm Spanner</li> <li>• Guard</li> <li>• Chain</li> </ul>

### Optional Accessories

Ref. No.	PN	Description	Sales Unit	Applicable Model	
				WOJ-3200	AO-5575A
1	TB07691	Chip Breaker Ass'y	1 piece	●	●
2	TB07474	Chip Breaker Ass'y	1 piece	●	●
3	TQ10581	Jet Oiler No.3013	1 piece	●	●
4	TB01098	Tube 4 x 7 x 3000 Ass'y	1 piece	●	●
5	TB01507	Cutting Oil 2L	1 piece	●	●
6	TB07696	Pipe Attachment Ass'y	1 piece	●	●
7	TB04374	Supporting Magnet Ass'y	1 piece	●	●
8	TB07690	One-touch Drill Adapter	1 piece	●	●
9	TB02536	Sleeve 6.5 for Triangle Shank Drill Bit	1 piece	●	●
		One-touch Type JETBROACH 25L	1 piece	●	●
		One-touch Type JETBROACH 35L	1 piece	●	●
		One-touch Type JETBROACH 50L	1 piece	●	●
		One-touch Type JETBROACH 75L	1 piece	●	●
		One-touch Type HI-BROACH 25L	1 piece	●	●
		One-touch Type HI-BROACH 50L	1 piece	●	●

\*50L for stacked plates



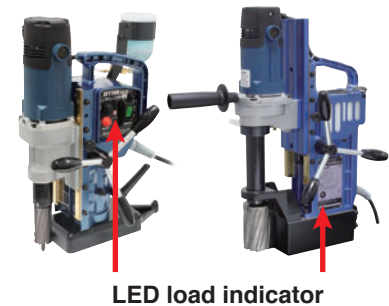
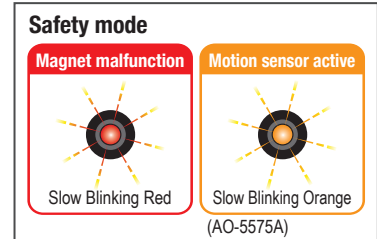
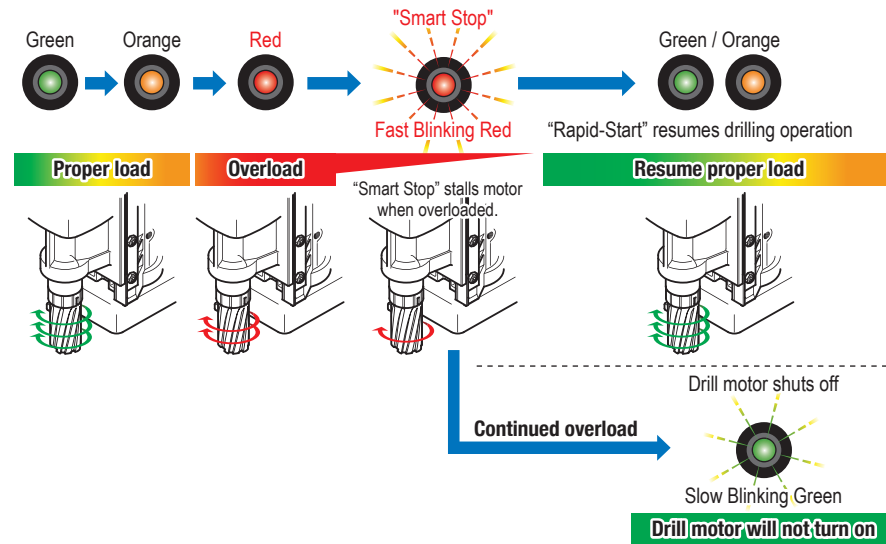
## Load Detector with "Smart-Stop/Rapid-Restart" Technology

### The world's first manual feed with "Smart-Stop / Rapid-Restart" technology for WOJ-3200 / AO-5575A

This new feature is a breakthrough in the Manual drill industry. Formerly only found on high end Nitto Kohki Automatic drills, this technology displays the current drill status via the LED Load Indicator. Customers will experience a cutting edge drill management system designed solely around saving time and money in replacement parts and cutters in addition to reducing user fatigue and down time.

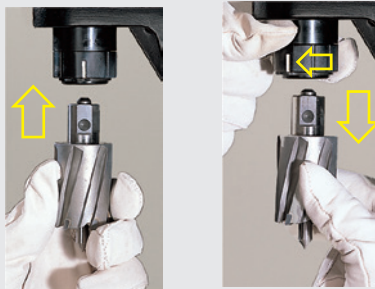
As the drilling load increases, the load indicator will change in color from green to orange to red. In addition, if excessive feeding force is applied, the load indicator will rapidly blink red and the rotation of the drill motor will slow down and temporarily stop. If the load is released while the load indicator is blinking red, the drill motor will resume its rotation.

#### LED load indicator



#### One-Touch Cutter Replacement

Replacement is quick and easy with our unique push fit self-centering cutter system.



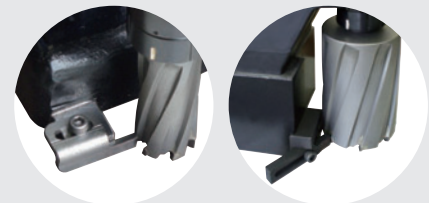
#### Reversible Feed Handle

Feed handles can be positioned on the right or left side for ease of drilling and mounting in confined spaces.



#### Chip Breaker (Optional)

This chip breaker prevents the cutter from becoming jammed with metal shavings.

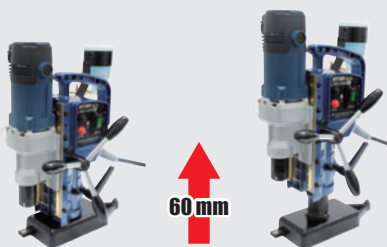


WOJ-3200

AO-5575A

#### Body Height Adjustment (WOJ-3200)

The use of Jetbroach cutters require the frame to be at the lowest position, while twist bit drilling requires the appropriate amount of elevation to be adjusted for safe operation.



#### One-Touch Drill Adapter (WOJ-3200)

Optional one-touch drill adapter allows the use of up to 13 mm twist drills to be used in the original arbor.



\*Twist drills are not provided with the one-touch drill adapter.

#### Built-in coolant tank to protect against damage (AO-5575A)

