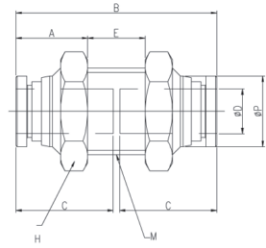


### GPMM

Bukhead Union

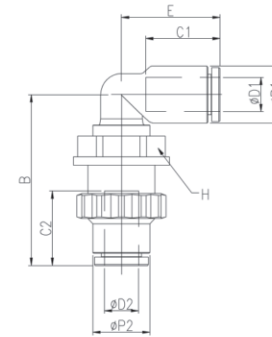


MODEL [ØD-T] Tube (Metric) – Thread (R)

MODEL	ØD	ØP	M	A	H	B	C	E	Orifice (Ømm)	W.G(g)	Qty/Inbox
GPMM 04	4	8.8	M12 X 1.0P	10.7	14	30	14.5	8.6	3.2	18.6	100
GPMM 06	6	11	M14 X 1.0P	11.3	17	31.9	15.5	9.4	5	25.5	50
GPMM 08	8	13	M16 X 1.0P	13.2	19	37	17.8	10.6	7	35.5	50
GPMM 10	10	15.5	M20 X 1.0P	13.6	24	40.1	19.4	12.9	9	60.7	25
GPMM 12	12	18.8	M22 X 1.0P	15.3	26	45.8	22.4	15.4	10	78.3	25

### GPLM

Bukhead Union P

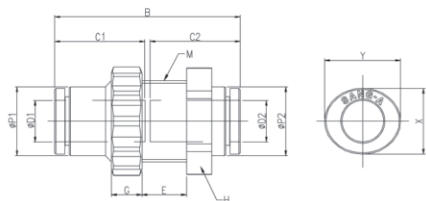


MODEL [ØD-T] Tube (Metric) – Thread (R)

MODEL	ØD1	ØD2	ØP1	ØP2	C1	C2	M	B	E	F	G	H	I	Orifice (Ømm)	W.G(g)	Qty/Inbox
GPLM 04	4	4	9	9	14.5	14.5	M12 X 1.5P	33.2	17.1	11.6	5	14	5.1	3.2	6.1	50
GPLM 06	6	6	11.2	11.2	15.5	15.5	M14 X 1.5P	35.3	18	13	5	17	6.6	4	9.5	50
GPLM 08	8	8	13.6	13.6	17.8	17.8	M16 X 1.5P	40.9	23.6	14	6	19	6.8	5.5	15.2	25
GPLM 10	10	10	16.3	16.3	19.4	19.4	M20 X 2.0P	45.6	25	16	6	24	8.15	9	21.9	20
GPLM 12	12	12	19.7	19.7	22.4	22.4	M24 X 2.0P	52.1	32.2	18	6	27	9.85	9.5	38.6	15

### GPMP

Bukhead Union P

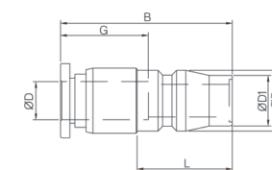


MODEL [ØD-T] Tube (Metric) – Thread (R)

MODEL	ØD1	ØD2	ØP1	ØP2	M	G	H	B	C1	C2	E	Orifice (Ømm)	W.G(g)	Qty/Inbox
GPMP 04	4	4	9	9	M12 X 1.5P	5	14	30	14.5	14.5	7.1	3.2	6.2	100
GPMP 06	6	6	11.2	11.2	M14 X 1.5P	5	17	31.9	15.5	15.5	8.6	5	9.3	50
GPMP 08	8	8	13.6	13.6	M16 X 1.5P	6	19	36.6	17.8	17.8	8.8	7	13.2	50
GPMP 10	10	10	16.3	16.3	M20 X 2.0P	6	24	40	19.4	19.4	10.2	9	22.1	25
GPMP 12	12	12	19.7	19.7	M24 X 2.0P	6	27	46	22.4	22.4	11.9	10	28.2	20

### GPCP

Straight Ace Coupler Plug



MODEL [ØD-T] Tube (Metric) – Thread (R)

MODEL	ØD	ØD1	ØP	B	L	C	W.G(g)	Qty/Inbox
GPCP 04	4	10.9	13.1	31.6	20.5	14.5	19	100
GPCP 06	6	10.9	13.1	30.3	20.5	15.5	18	100
GPCP 08	8	10.9	13.1	35.2	20.5	17.8	19	100
GPCP 10	10	10.9	13.1	41.8	20.5	19.4	31	50
GPCP 12	12	10.9	13.1	45.8	20.5	22.4	43	50
GPCP 14	14	10.9	13.1	47.8	20.5	24.4	45	25
GPCP 16	16	10.9	13.1	48.5	20.5	25	54	25