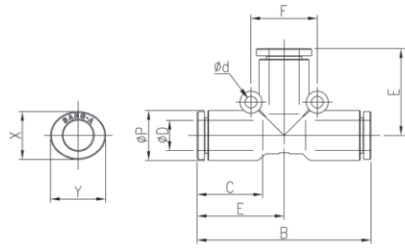


### GPU

Union Tee

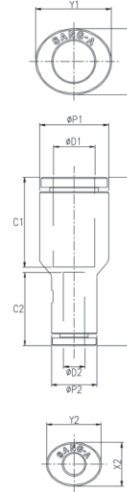


MODEL [ØD-T] Tube (Metric) - Thread (R)

MODEL	ØD	ØP	B	C	E	F	Ød	X	Y	Orifice (Ømm)	W.G(g)	Qty/Inbox
GPU 03	3	9	34.2	14.5	17.1	12	3.2	8.6	10.8	2.5	5.3	100
GPU 04	4	9	34.2	14.5	17.1	12	3.2	8.6	10.8	3.2	5.0	100
GPU 06	6	11.2	38	15.5	19	13	3.2	11	13	5	7.3	50
GPU 08	8	13.6	47.2	17.8	23.6	18	3.2	13	15	7	14.1	50
GPU 10	10	16.3	50	19.4	25	24	4.2	16	18.5	9	17.7	25
GPU 12	12	19.7	64.4	22.4	32.2	28	4.2	19.5	22.5	10	33.5	20
GPU 14	14	23.5	63.8	24.4	31.9	27	4.2	23	25	12	57.3	12
GPU 16	16	25.6	68	25	34	30	4.2	24	27	14	53.8	12

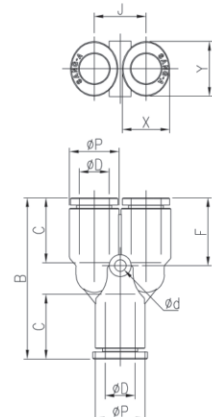
MODEL [ØD-T] Tube (Metric) - Thread (R)

MODEL	ØD1	ØD2	ØP1	ØP2	B	C1	C2	X1	Y1	X2	Y2	Orifice (Ømm)	W.G(g)	Qty/Inbox
GPG 0403	4	3	9	9	30.2	14.5	14.5	8.6	10.8	8.6	10.8	2.5	2.9	100
GPG 0604	6	4	11.2	9	31.5	15.5	14.5	11	13	8.6	10.8	3.2	3.8	100
GPG 0804	8	4	13.6	9	33.3	17.8	14.5	13	15	8.6	10.8	3.2	4.9	50
GPG 0806	8	6	13.6	11.2	34.3	17.8	15.5	13	15	11	13	5	5.8	50
GPG 1006	10	6	16.3	11.2	35.9	19.4	15.5	16	18.5	11	13	5	7.2	50
GPG 1008	10	8	16.3	13.6	38.2	19.4	17.8	16	18.5	13	15	7	8.4	50
GPG 1208	12	8	19.7	13.6	41.2	22.4	17.8	19.5	22.5	13	15	7	12.4	25
GPG 1210	12	10	19.7	16.3	42.8	22.4	19.4	19.5	22.5	16	18.5	9	14.0	25
GPG 1612	16	12	25.6	19.7	48.9	25	22.4	24	27	19.5	22.5	10	23.4	25



### GPY

Union Y

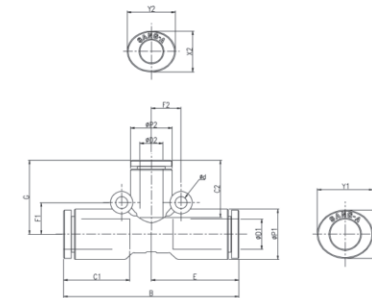


MODEL [ØD-T] Tube (Metric) - Thread (R)

MODEL	ØD	ØP	B	C	F	J	Ød	X	Y	Orifice (Ømm)	W.G(g)	Qty/Inbox
GPY 03	3	9	31.2	14.5	13.2	9.3	3.2	8.6	10.8	2.1	5.2	100
GPY 04	4	9	31.2	14.5	13.2	9.3	3.2	8.6	10.8	2.1	4.9	100
GPY 06	6	11.2	34.7	15.5	14.1	11.4	3.2	11	13	3.6	7.3	50
GPY 08	8	13.6	44.2	17.8	18.6	14.2	3.2	13	15	5.4	13.9	50
GPY 10	10	16.3	46	19.4	18	17	4.2	16	18.5	6.4	17.7	25
GPY 12	12	19.7	56.8	22.4	23.9	20	4.2	19.5	22.5	7.3	32.5	20
GPY 14	14	23.5	59.3	24.4	24.4	24	4.2	23	25	8.8	53.7	16
GPY 16	16	25.6	62	25	24	26	4.2	24	27	12	55.5	12

### GPUG

Different Dia of Union Tee



MODEL [ØD-T] Tube (Metric) - Thread (R)

MODEL	ØD1	ØD2	ØP1	ØP2	B	C1	C2	E	F1	F2	G	Ød	X1	Y1	X2	Y2	Orifice (Ømm)	W.G(g)	Qty/Inbox
GPUG 0604	6	4	11.2	9	37.9	15.5	14.5	19	6.5	6	18.1	3.2	11	13	8.6	11	3.2	6.2	50
GPUG 0804	8	4	13.6	11.2	47.2	17.8	14.5	23.6	8.5	8	19.6	3.2	13	15	8.6	11	3.2	12.1	50
GPUG 0806	8	6	13.6	11.2	47.2	17.8	15.5	23.6	8.5	8	20	3.2	13	15	11	13	5	10.0	50
GPUG 1006	10	6	16.3	13.6	50	19.4	15.5	25	10	9.5	23.5	4.2	16	19	11	13	5	18.3	25
GPUG 1008	10	8	16.3	13.6	50	19.4	17.8	25	10	9.5	24.1	4.2	16	19	13	15	7	14.7	25
GPUG 1208	12	8	19.7	16.3	64.4	22.4	17.8	32.2	12	10	25.1	4.2	19.5	23	13	15	7	30.1	25
GPUG 1210	12	10	19.7	16.3	64.4	22.4	19.4	32.2	12	10	25.5	4.2	19.5	23	16	19	9	25.6	20