

No. 700

Super Cushion Screwdriver



Highly elastic cushion grip.
Fits the palm of the hand. No slipping.
Transmits high torque to the tip.



A D V A N C E D
GEL-FUNCTION
T E C H N O L O G Y

No. 700
Super Cushion
Screwdriver

VESEL Cushion Grip Screwdrivers fit not only screw heads but also your hand. This series assure the efficient torque transmission.

※The above illustration is for reference only.

HAND TOOLS

BITS & SOCKETS

ELECTRIC TOOLS

AIR TOOLS

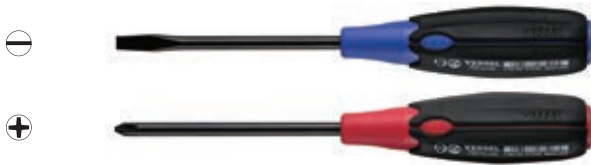
STATIC SOLUTIONS

GASOLINE ENGINE TOOLS

No. 700 Super Cushion Screwdriver

PAT.

- "Super Cushion" grip fits your hand perfectly.
- Rust-resistant black chrome plating.



No.700	Bit						Inner Ctn.	Outer Ctn.	EDP No.
	⊖	⊖	⊖	⊖	⊖	⊖			
⊖ 5.5 × 75	5.5	0.8	75	5.5	29	182	6	120	125211
⊖ 6 × 100	6.0	0.9	100	6.4	32	215	6	120	125212
⊖ 6 × 150	6.0	0.9	150	6.4	32	265	6	120	125213
⊖ 8 × 150	8.0	1.1	150	8.0	34	275	6	120	125214
⊕ 1 × 75	⊕No.1	75	5.5	29	182	6	120	125215	
⊕ 2 × 100	⊕No.2	100	6.4	32	215	6	120	125216	
⊕ 2 × 150	⊕No.2	150	6.4	32	265	6	120	125217	
⊕ 3 × 150	⊕No.3	150	8.0	34	275	6	120	125218	

No. 720 Super Cushion Screwdriver (Stubby Type)

PAT.

- "Super Cushion" grip fits your hand perfectly.
- Rust-resistant black chrome plating.
- Ideal for working in cramped places.



No.720	Bit						Inner Ctn.	Outer Ctn.	EDP No.
	⊖	⊖	⊖	⊖	⊖	⊖			
⊖ 6 × 15	6.0	0.9	15	6.0	35	68	6	120	125221
⊕ 1 × 15	⊕No.1	15	6.0	35	68	6	120	125222	
⊕ 2 × 15	⊕No.2	15	6.0	35	68	6	120	125223	

No. 730 Super Cushion Tang-Thru Screwdriver

PAT.

- "Super Cushion" grip fits your hand perfectly.
- Tang-thru type with a star-shaped end cap for hammering.
- Rust-resistant black chrome plating.



No.730	Bit						Inner Ctn.	Outer Ctn.	EDP No.
	⊖	⊖	⊖	⊖	⊖	⊖			
⊖ 5.5 × 75	5.5	0.8	75	5.5	29	182	6	120	125231
⊖ 6 × 100	6.0	0.9	100	6.4	32	215	6	120	125232
⊖ 6 × 150	6.0	0.9	150	6.4	32	265	6	120	125233
⊖ 8 × 150	8.0	1.1	150	8.0	34	276	6	60	125234
⊕ 1 × 75	⊕No.1	75	5.5	29	182	6	120	125235	
⊕ 2 × 100	⊕No.2	100	6.4	32	215	6	120	125236	
⊕ 2 × 150	⊕No.2	150	6.4	32	265	6	120	125237	
⊕ 3 × 150	⊕No.3	150	8.0	34	276	6	60	125238	

No. 610 Cushion Grip Screwdriver (Thin Shank Type)

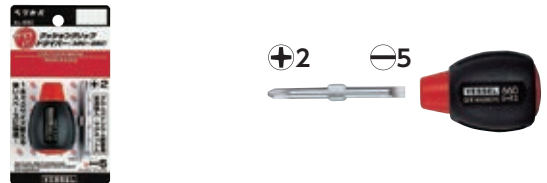
- Ideal for screw tightening in precision fields.
- Straight cut slotted tip good even for a use in cramped spaces.
- Highly precise black point tip, not being affected by the thickness of the plating layer.



No.610	Bit						Inner Ctn.	Outer Ctn.	EDP No.
	⊖	⊖	⊖	⊖	⊖	⊖			
⊖ 4 × 75	4.0	0.5	75	4.0	20.5	162	12	120	125332
⊖ 4 × 100	4.0	0.5	100	4.0	20.5	187	12	120	125333
⊖ 4 × 150	4.0	0.5	150	4.0	20.5	237	12	120	125335
⊖ 4 × 200	4.0	0.5	200	4.0	20.5	287	12	120	125336
⊕ 00 × 75	⊕No.00	75	4.0	20.5	162	12	120	125337	
⊕ 0 × 75	⊕No.0	75	4.0	20.5	162	12	120	125339	
⊕ 0 × 100	⊕No.0	100	4.0	20.5	187	12	120	125340	
⊕ 1 × 75	⊕No.1	75	4.0	20.5	162	12	120	125341	
⊕ 1 × 100	⊕No.1	100	4.0	20.5	187	12	120	125342	
⊕ 1 × 150	⊕No.1	150	4.0	20.5	237	12	120	125343	

No. 660 Cushion Grip Screwdriver (Stubby Type)

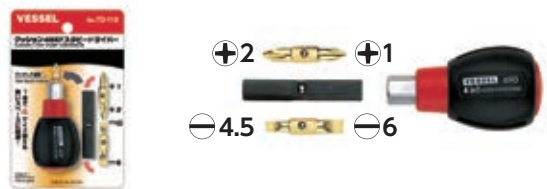
- With reversible blade (⊖5, ⊕2).



Set content		Package size (mm)	Inner Ctn.	Outer Ctn.	EDP No.
Grip	length 53mm dia. 35mm				
Reversible blade	⊖5 / ⊕2 × 60mm 1pc	135×75×35	10	60	133085

No. TD-110 Cushion 4-way Stubby Screwdriver

- Handle can store 2 types of double-ended bit with different tip end.



Set content		Package size (mm)	Inner Ctn.	Outer Ctn.	EDP No.
Grip	length 86mm dia. 35mm				
Reversible blade	⊕1 / ⊕2 × 35mm 1pc	135×85×35	10	60	251110
Holder	⊖4.5 / ⊖6 × 35mm 1pc				
	1 pc				

No. 220 Ball-Grip Screwdriver

- Transmits ample tightening force to screw.
- Cushion grip color-coded by ⊕ ⊖.
- High precision black point tip.

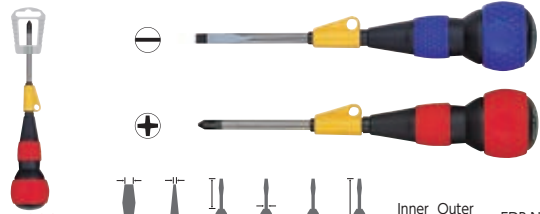


No.220	Inner Ctn.	Outer Ctn.	EDP No.
⊖ 5.5× 75	5.5 0.8 75 5.5 32 156	6 60	125351
⊖ 5.5× 100	5.5 0.8 100 5.5 32 181	6 60	125361
⊖ 5.5× 150	5.5 0.8 150 5.5 32 231	6 60	125362
⊖ 6 × 100	6.0 0.9 100 6.4 41 200	6 60	125352
⊖ 6 × 150	6.0 0.9 150 6.4 41 250	6 60	125353
⊖ 6 × 200	6.0 0.9 200 6.4 41 300	6 60	125354
⊖ 6 × 300	6.0 0.9 300 6.4 41 400	6 60	125363
⊕ 8 × 150	8.0 1.1 150 6.4 41 250	6 60	125376
⊕ 1 × 75	⊕No.1 75 5.5 32 156	6 60	125355
⊕ 1 × 100	⊕No.1 100 5.5 32 181	6 60	125371
⊕ 1 × 150	⊕No.1 150 5.5 32 231	6 60	125372
⊕ 2 × 75	⊕No.2 75 5.5 32 156	6 60	125375
⊕ 2 × 100	⊕No.2 100 6.4 41 200	6 60	125356
⊕ 2 × 150	⊕No.2 150 6.4 41 250	6 60	125357
⊕ 2 × 200	⊕No.2 200 6.4 41 300	6 60	125358
⊕ 2 × 300	⊕No.2 300 6.4 41 400	6 60	125359
⊕ 3 × 150	⊕No.3 150 6.4 41 250	6 60	125374

No. 220F Free-Turning Ball Grip Screwdriver (Screwdriver only)

PAT.

- Free-turning hook enables fast turning.
- Elastomer resin excellently fits the hand.



No.220F	Inner Ctn.	Outer Ctn.	EDP No.
⊖ 6 × 100	6.0 0.9 100 6.4 41 200	6 60	125541
⊖ 6 × 150	6.0 0.9 150 6.4 41 250	6 60	125542
⊕ 2 × 100	⊕No.2 100 6.4 41 200	6 60	125543
⊕ 2 × 150	⊕No.2 150 6.4 41 250	6 60	125544

No. 230 Ball-Grip Tang-Thru Screwdriver

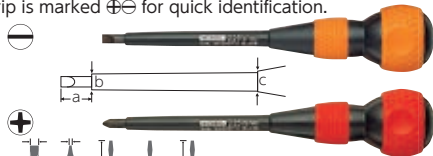
- Large nut for easy hammering.
- Transmits ample tightening force to screw.
- Cushion grip color-coded by ⊕ ⊖. ● High precision black point tip.



No.230	Inner Ctn.	Outer Ctn.	EDP No.
⊖ 5.5× 75	5.5 0.8 75 5 32 150	6 60	125841
⊖ 6 × 100	6.0 0.9 100 6 41 189	6 60	125842
⊖ 6 × 150	6.0 0.9 150 6 41 239	6 60	125843
⊕ 1 × 75	⊕No.1 75 5 32 150	6 60	125844
⊕ 2 × 100	⊕No.2 100 6 41 189	6 60	125845
⊕ 2 × 150	⊕No.2 150 6 41 239	6 60	125846
⊕ 3 × 150	⊕No.3 150 6 41 239	6 60	125847

No. 225 Ball-Grip Screwdriver (With covered shank)

- Resin-covered shank. It prevents electrical short circuit.
- Transmits ample tightening force to screw.
- Cushion grip is marked ⊕ ⊖ for quick identification.



No.225	Inner Ctn.	Outer Ctn.	EDP No.
⊖ 6 × 100	6.0 0.9 100 41 200 14 8 10	6 60	125382
⊖ 6 × 150	6.0 0.9 150 41 250 14 8 10	6 60	125383
⊕ 2 × 100	⊕No.2 100 41 200 14 8 10	6 60	125389
⊕ 2 × 150	⊕No.2 150 41 250 14 8 10	6 60	125390

⚠ Electric insulation is not guaranteed. For safety purposes, shut off power before use. The covered shaft protects against unexpected shorts. Should it become scratched, damaged or deteriorated, do not use the screwdriver.

No. 200 Ball-Grip Insulated Screwdriver

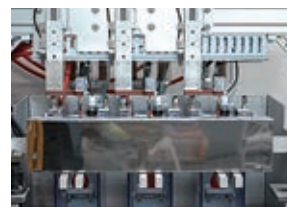
- High precision black point tip (black oxide finish)
- Easy identification of tip type by touching the end cap dent.



No.220	Inner Ctn.	Outer Ctn.	EDP No.
⊖ 5.5× 75	5.5 0.8 75 5 32 150	6 60	125841
⊖ 6 × 100	6.0 0.9 100 6 41 189	6 60	125842
⊖ 6 × 150	6.0 0.9 150 6 41 239	6 60	125843
⊕ 1 × 75	⊕No.1 75 5 32 150	6 60	125844
⊕ 2 × 100	⊕No.2 100 6 41 189	6 60	125845
⊕ 2 × 150	⊕No.2 150 6 41 239	6 60	125846
⊕ 3 × 150	⊕No.3 150 6 41 239	6 60	125847

One point

Insulated Screwdrivers Series certified by VDE, International certification authority.



1000V AC, 1500V DC



1000V IEC60900
VDE is an authorized third-party certification organization.

Reliable - 100% Energization (Dielectric) Inspection Conducted!



For prevention of electric shock or short-circuit during electric works for power equipment, telecommunication devices, electric vehicles, solar power stations, and so on.

HAND TOOLS

BITS & SOCKETS

ELECTRIC TOOLS

AIR TOOLS

STATIC SOLUTIONS

GASOLINE ENGINE TOOLS

No. 250 Tang-Thru Screwdriver w/Ceramic Ball (For electric works)

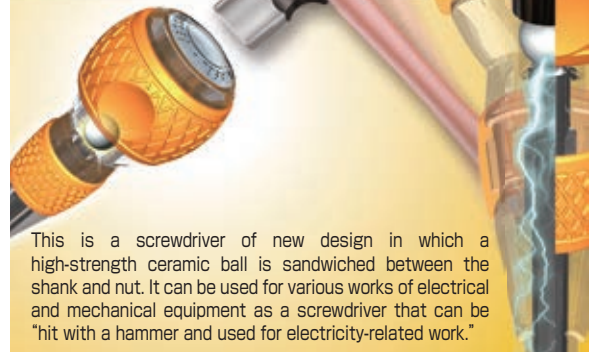
- Incorporates a ceramic ball preventing electricity from being conducted.
- Uses zirconia ceramics having the highest rigidity and wear resistance among ceramics.
- Easy to tap with a hammer on the large nut.
- High-precision black point tip.



No.250						Inner Ctn. (mm)	Outer Ctn.	EDP No.
⌀6 × 100	6.0	0.9	100	6.4	41	200	6 60	112105
⌀6 × 150	6.0	0.9	150	6.4	41	250	6 60	112106
⌀8 × 150	8.0	1.1	150	6.4	41	250	6 60	112109
⊕2 × 100	⊕No.2	100	6.4	41	200	6 60	112107	
⊕2 × 150	⊕No.2	150	6.4	41	250	6 60	112108	
⊕3 × 150	⊕No.3	150	6.4	41	250	6 60	112110	

One point

Tang-thru screwdriver No. 250 that incorporates a ceramic ball preventing electricity from being conducted



This is a screwdriver of new design in which a high-strength ceramic ball is sandwiched between the shank and nut. It can be used for various works of electrical and mechanical equipment as a screwdriver that can be "hit with a hammer and used for electricity-related work."

⚠ Electric insulation is not guaranteed. For safety purposes, shut off power before use.

No. 220W Ball Grip (Bit-replaceable grip)

- Compatibility with a 6.35mm hex drive bit enables to be used as a familiar ball grip screwdriver.



Model No.	Grip size	Package size (mm)	Outer Ctn.	EDP No.
220W	length 100mm, dia.41mm	145×50×43	10	125344

No. 230W Ball Grip (Bit-replaceable Tang-Thru grip)

- Blade interchangeable tang-thru grip. (A/F6.35mm)
- 25mm large nut incorporated transmitting well the hammering power.



Model No.	Grip size	Package size (mm)	Inner Ctn.	EDP No.
230W	length 100mm, dia.41mm	145×50×43	10	125326

No. 270BW Cushion Stubby (Bit-replaceable grip)

- Stubby type optimal for a narrow area. Compatibility with a 6.35mm hex drive bit for electric screwdrivers.

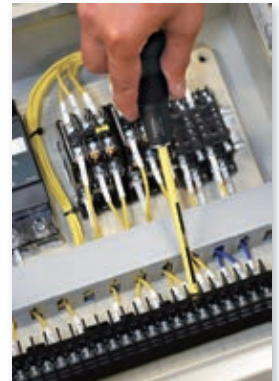


Model No.	Grip size	Package size (mm)	Outer Ctn.	EDP No.
270BW	length 55.5mm, dia.35mm	100×50×37	10	233074

One point

Bit-replaceable grip

Convenient grip can be used with various sizes of ●6.35mm bit for electric screwdrivers.



⚠ Shut off power before use for safety purposes when using this product for electric works.



No. B-640TX Cushion Grip TORX Screwdriver

- Optimal for fastening screws in precision fields.
- Non-electrolytic plating, keeping the precise tip quality.
- Cushion grip fitting comfortably in a hand.
- Also good for tamper-proof TORX screws (except T5 and T6).



No. B-640TX	Bit	Length (mm)	Inner Ctn.	Outer Ctn.	EDP No.			
T5	1.42	40	4.0	20.5	126	6	60	123561
T6	1.69	40	4.0	20.5	126	6	60	123562
T7H	1.97	40	4.0	20.5	126	6	60	123563
T8H	2.30	40	4.0	20.5	126	6	60	123564
T9H	2.48	40	4.0	20.5	126	6	60	123565

TORX® is a registered trademark of Acument™ Intellectual Properties, LLC (USA). VESSEL has a manufacturing license in Japan and selling same to the world.

No. 265 "NEON" Screwdriver

- Glow-in-the-dark type.
- High precision black point tip.



No. 265	Bit	Length (mm)	Inner Ctn.	Outer Ctn.	EDP No.				
⊖ 6× 100	6.0	0.9	100	6.4	40	185	6	60	125561
⊖ 6× 150	6.0	0.9	150	6.4	40	235	6	60	125562
⊕ 2× 100	⊕No.2	100	6.4	40	185	6	60	125563	
⊕ 2× 150	⊕No.2	150	6.4	40	235	6	60	125564	

No. 2200 Ball Ratchet Screwdriver

- With 36-teeth gear ratchet to realize comfortable operation with fine tuning.
- Shank cover prevents short circuits. Thin shank is convenient for operating on terminal blocks.
- Shank uses bit materials, fully hardened. Replacement shank is available as option.

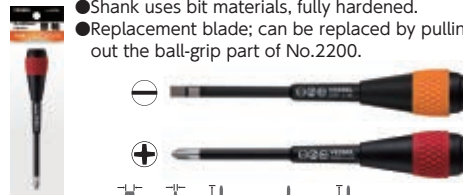


No. 2200	Bit	Length (mm)	Inner Ctn.	Outer Ctn.	EDP No.				
⊖ 6× 100	6.0	0.8	100	6.0	41	200	6	60	125395
⊖ 6× 150	6.0	0.8	150	6.0	41	250	6	60	125396
⊕ 2× 100	⊕No.2	100	6.0	41	200	6	60	125345	
⊕ 2× 150	⊕No.2	150	6.0	41	250	6	60	125346	
⊕ 3× 150	⊕No.3	150	6.0	41	250	6	60	125347	

⚠ Electric insulation is not guaranteed. For safety purposes, shut off power before use.

No. 2200B Ball Ratchet Screwdriver Replacement Blade

- Shank uses bit materials, fully hardened.
- Replacement blade; can be replaced by pulling out the ball-grip part of No.2200.



No. 2200B	Bit	Length (mm)	Inner Ctn.	Outer Ctn.	EDP No.			
⊖ 6× 100	6.0	0.8	100	6.0	158	6	60	125397
⊖ 6× 150	6.0	0.8	150	6.0	208	6	60	125398
⊕ 2× 100	⊕No.2	100	6.0	158	6	60	125348	
⊕ 2× 150	⊕No.2	150	6.0	208	6	60	125349	
⊕ 3× 150	⊕No.3	150	6.0	208	6	60	125350	

No. SC-90 Anti-drop Slim Cord

- Cord to prevent screwdrivers from dropping.
- Provided with a sleeve to avoid rings forming, which cause the cord to get caught.



Package content		Inner Ctn.	EDP No.
Mounted load	500g or less		
Length	482(maximum length 1500)mm	10	125405
Material	Sleeve: polypropylene Rubber band: polypropylene and natural rubber		

One point

Move the sleeve to straighten the cord!



HAND TOOLS

BITS & SOCKETS

ELECTRIC TOOLS

AIR TOOLS

STATIC SOLUTIONS

GASOLINE ENGINE TOOLS