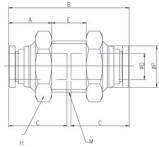


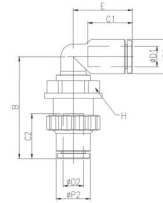
GPM
Bukhead Union



MODEL[ØD-T] Tube(Metric)–Thread(R)

MODEL	ØD	ØP	M	A	H	B	C	E	Orifice (mm)	W.G(g)	C3/Inbox
GPM 04	4	8.8	M12 X 1.0P	10.7	14	30	14.5	8.6	3.2	18.6	100
GPM 06	6	11	M14 X 1.0P	11.3	17	31.9	15.5	9.4	5	25.5	50
GPM 08	8	13	M16 X 1.0P	13.2	19	37	17.8	10.6	7	35.5	50
GPM 10	10	15.5	M20 X 1.0P	13.6	24	40.1	19.4	12.9	9	60.7	25
GPM 12	12	18.8	M22 X 1.0P	15.3	26	45.8	22.4	15.4	10	78.3	25

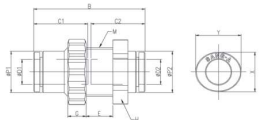
GPLM
Bukhead Union P



MODEL[ØD-T] Tube(Metric)–Thread(R)

MODEL	ØD1	ØD2	ØP1	ØP2	C1	C2	M	B	E	F	G	H	I	Orifice (mm)	W.G(g)	C3/Inbox
GPLM 04	4	4	9	9	14.5	14.5	M12 X 1.5P	33.2	17.1	11.6	5	14	5.1	3.2	6.1	50
GPLM 06	6	6	11.2	11.2	15.5	15.5	M14 X 1.5P	35.3	18	13	5	17	6.6	4	9.5	50
GPLM 08	8	8	13.6	13.6	17.8	17.8	M16 X 1.5P	40.9	23.6	14	6	19	6.8	5.5	15.2	25
GPLM 10	10	10	16.3	16.3	19.4	19.4	M20 X 2.0P	45.6	25	16	6	24	8.15	9	21.9	20
GPLM 12	12	12	19.7	19.7	22.4	22.4	M24 X 2.0P	52.1	32.2	18	6	27	9.85	9.5	38.6	15

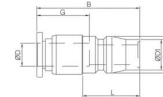
GPPM
Bukhead Union P



MODEL[ØD-T] Tube(Metric)–Thread(R)

MODEL	ØD1	ØD2	ØP1	ØP2	M	G	H	B	C1	C2	E	Orifice (mm)	W.G(g)	C3/Inbox
GPPM 04	4	4	9	9	M12 X 1.5P	5	14	30	14.5	14.5	7.1	3.2	6.2	100
GPPM 06	6	6	11.2	11.2	M14 X 1.5P	5	17	31.9	15.5	15.5	8.6	5	9.3	50
GPPM 08	8	8	13.6	13.6	M16 X 1.5P	6	19	36.6	17.8	17.8	8.8	7	13.2	50
GPPM 10	10	10	16.3	16.3	M20 X 2.0P	6	24	40	19.4	19.4	10.2	9	22.1	25
GPPM 12	12	12	19.7	19.7	M24 X 2.0P	6	27	46	22.4	22.4	11.9	10	28.2	20

GPCP
Straight Ace Coupler Plug



MODEL[ØD-T] Tube(Metric)–Thread(R)

MODEL	ØD	ØD1	ØP	B	L	C	W.G(g)	C3/Inbox
GPCP 04	4	10.9	13.1	31.6	20.5	14.5	19	100
GPCP 06	6	10.9	13.1	30.3	20.5	15.5	18	100
GPCP 08	8	10.9	13.1	35.2	20.5	17.8	19	100
GPCP 10	10	10.9	13.1	41.8	20.5	19.4	31	50
GPCP 12	12	10.9	13.1	45.8	20.5	22.4	43	50
GPCP 14	14	10.9	13.1	47.8	20.5	24.4	45	25
GPCP 16	16	10.9	13.1	48.5	20.5	25	54	25