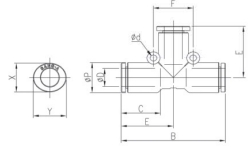


### GPUP

Union Tee

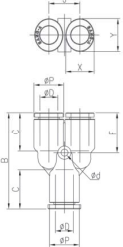


MODEL [ØD-T] Tube(Metric) – Thread(R)

MODEL	ØD	ØP	B	C	E	F	Ød	X	Y	Orifice (Ømm)	W.G(g)	Qty/Inbox
GPUP 03	3	9	34.2	14.5	17.1	12	3.2	8.6	10.8	2.5	5.3	100
GPUP 04	4	9	34.2	14.5	17.1	12	3.2	8.6	10.8	3.2	5.0	100
GPUP 06	6	11.2	38	15.5	19	13	3.2	11	13	5	7.3	50
GPUP 08	8	13.6	47.2	17.8	23.6	18	3.2	13	15	7	14.1	50
GPUP 10	10	16.3	50	19.4	25	24	4.2	16	18.5	9	17.7	25
GPUP 12	12	19.7	64.4	22.4	32.2	28	4.2	19.5	22.5	10	33.5	20
GPUP 14	14	23.5	63.8	24.4	31.9	27	4.2	23	25	12	57.3	12
GPUP 16	16	25.6	68	25	34	30	4.2	24	27	14	53.8	12

### GPY

Union Y

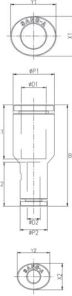


MODEL [ØD-T] Tube(Metric) – Thread(R)

MODEL	ØD	ØP	B	C	F	J	Ød	X	Y	Orifice (Ømm)	W.G(g)	Qty/Inbox
GPY 03	3	9	31.2	14.5	13.2	9.3	3.2	8.6	10.8	2.1	5.2	100
GPY 04	4	9	31.2	14.5	13.2	9.3	3.2	8.6	10.8	2.1	4.9	100
GPY 06	6	11.2	34.7	15.5	14.1	11.4	3.2	11	13	3.6	7.3	50
GPY 08	8	13.6	44.2	17.8	18.6	14.2	3.2	13	15	5.4	13.9	50
GPY 10	10	16.3	46	19.4	18	17	4.2	16	18.5	6.4	17.7	25
GPY 12	12	19.7	56.8	22.4	23.9	20	4.2	19.5	22.5	7.3	32.5	20
GPY 14	14	23.5	59.3	24.4	24.4	24	4.2	23	25	8.8	53.7	16
GPY 16	16	25.6	62	25	24	26	4.2	24	27	12	55.5	12

### GPG

Reducer

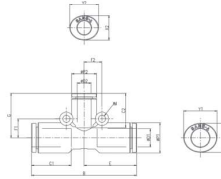


MODEL [ØD-T] Tube(Metric) – Thread(R)

MODEL	ØD1	ØD2	ØP1	ØP2	B	C1	C2	X1	Y1	X2	Y2	Orifice (Ømm)	W.G(g)	Qty/Inbox
GPG 0403	4	3	9	9	30.2	14.5	14.5	8.6	10.8	8.6	10.8	2.5	2.9	100
GPG 0604	6	4	11.2	9	31.5	15.5	14.5	11	13	8.6	10.8	3.2	3.8	100
GPG 0804	8	4	13.6	9	33.3	17.8	14.5	13	15	8.6	10.8	3.2	4.9	50
GPG 0806	8	6	13.6	11.2	34.3	17.8	15.5	13	15	11	13	5	5.8	50
GPG 1006	10	6	16.3	11.2	35.9	19.4	15.5	16	18.5	11	13	5	7.2	50
GPG 1008	10	8	16.3	13.6	38.2	19.4	17.8	16	18.5	13	15	7	8.4	50
GPG 1208	12	8	19.7	13.6	41.2	22.4	17.8	19.5	22.5	13	15	7	12.4	25
GPG 1210	12	10	19.7	16.3	42.8	22.4	19.4	19.5	22.5	16	18.5	9	14.0	25
GPG 1612	16	12	25.6	19.7	48.9	25	22.4	24	27	19.5	22.5	10	23.4	25

### GPUG

Different Dia of Union Tee



MODEL [ØD-T] Tube(Metric) – Thread(R)

MODEL	ØD1	ØD2	ØP1	ØP2	B	C1	C2	E	F1	F2	G	Ød	X1	Y1	X2	Y2	Orifice (Ømm)	W.G(g)	Qty/Inbox
GPUG 0604	6	4	11.2	9	37.9	15.5	14.5	19	6.5	6	18.1	3.2	11	13	8.6	11	3.2	6.2	50
GPUG 0804	8	4	13.6	11.2	47.2	17.8	14.5	23.6	8.5	8	19.6	3.2	13	15	8.6	11	3.2	12.1	50
GPUG 0806	8	6	13.6	11.2	47.2	17.8	15.5	23.6	8.5	8	20	3.2	13	15	11	13	5	10.0	50
GPUG 1006	10	6	16.3	13.6	50	19.4	15.5	25	10	9.5	23.5	4.2	16	19	11	13	5	18.3	25
GPUG 1008	10	8	16.3	13.6	50	19.4	17.8	25	10	9.5	24.1	4.2	16	19	13	15	7	14.7	25
GPUG 1208	12	8	19.7	16.3	64.4	22.4	17.8	32.2	12	10	25.1	4.2	19.5	23	13	15	7	30.1	25
GPUG 1210	12	10	19.7	16.3	64.4	22.4	19.4	32.2	12	10	25.5	4.2	19.5	23	16	19	9	25.6	20