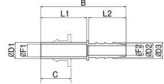


PJH
Plug-In Extended Elbow



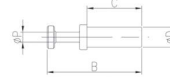
MODEL[ØD-T] Tube(Metric)-Thread(R)

MODEL	B	C	ØD1	ØD2	ØD3	ØF1	ØF2	L1	L2	W.G(g)	Qty/Inbox
PJH 04-04	36	16	4	4.8	5.9	2	2	18	17	0.9	100
PJH 04-05	36	16	4	6	6.9	2	4.2	18	17	0.8	100
PJH 06-05	41	17	6	5.9	6.9	4	4	23	17	1.1	100
PJH 06-06	41	17	6	6.8	7.9	4	4	23	17	1.4	100
PJH 08-06	43	18.5	8	6.8	7.9	6	4	25	17	1.7	100
PJH 08-08	48.2	18.5	8	8.6	10	6	6	25	22	2.3	100
PJH 10-08	50.2	21	10	8.6	10	8	6.2	27	22	2.7	100
PJH 12-08	54.2	22.5	12	8.6	10	10	6.2	31	22	2.8	100
PJH 12-10	54.7	22.5	12	10.6	12	10	8	31	22.5	3.1	50
PJH 12-13	55	22.5	12	13.5	15	10	10	31	22.5	5	50
PJH 14-14	59.5	24.5	14	14.7	16	12	10	35.5	22.5	5.8	50
PJH 04-1/8	36	16	4	3.8	5	2	2	17	17	0.5	100
PJH 08-1/4	43	18.5	8	7.3	8.5	6	4.6	24	17	1.7	100
PJH 10-1/4	45.2	21	10	7.3	8.5	8	4.6	26	17	2.3	100
PJH 12-1/2	55	22.5	12	13.2	14.5	10	10	30	22.5	4.7	50
PJH 14-1/2	59.5	24.5	14	13.2	14.5	12	10	34.5	22.5	4.8	50

MODEL[ØD-T] Tube(Metric)-Thread(R)

MODEL	ØD	B	ØP	C	W.G(g)	Qty/Inbox
PP 04	4	30	2	19	0.4	100
PP 06	6	34	3	20	0.7	100
PP 08	8	38	4	22	1.4	100
PP 10	10	41	5	25	2	50
PP 12	12	43	7	27	3.6	50
PP 16	16	47	9	31	4	25

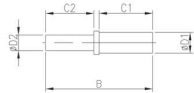
PP
Plug



MODEL[ØD-T] Tube(Metric)-Thread(R)

MODEL	ØD1	ØD2	B	C1	C2	Friction (Ømm)	W.G(g)	Qty/Inbox
PIG 06-04	6	4	37.5	18.6	17.7	2	0.7	100
PIG 08-04	6	4	44	22	19	2	0.9	100
PIG 08-06	8	6	41.2	20.6	18.6	4	1.5	100
PIG 10-06	10	6	48	25	20	4	1.6	100
PIG 10-08	10	8	45	22.6	20.4	5	2.8	100
PIG 12-08	12	8	52	27	22	5	2.6	50
PIG 12-10	12	10	49.8	25.4	22.4	5.5	4.9	50
PIG 16-12	16	12	54	27	25	9	8.2	50

PIG
Reducer Tube Splicer



MODEL[ØD-T] Tube(Metric)-Thread(R)

MODEL	ØD1	ØD2	ØP	B	C1	C2	F	J	X	Y	Friction (Ømm)	W.G(g)	Qty/Inbox
GPYJ 04	4	4	9	37.8	14.5	14.5	16	9.3	8.6	10.8	2	3.4	100
GPYJ 06	6	6	11.2	45	15.5	15.5	17.2	11.4	11	13	3.5	5.4	50
GPYJ 08	8	8	13.6	53.1	17.8	17.8	22	14.2	13	15	4.4	9.2	50
GPYJ 10	10	10	16.3	56	19.4	19.4	22.6	17	16	18.5	5.6	13.5	25
GPYJ 12	12	12	19.7	63.4	22.4	22.4	27.2	20	19.5	22.5	6.4	24.0	20

GPYJ
Plug-in Y

