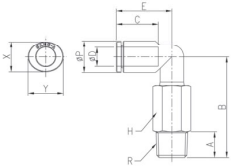


### GPLL(L)

Extended Male Elbow



MODEL [ØD-T] Tube (Metric) – Thread (R)

MODEL	ØD	R	ØP	A	B	C	E	H	X	Y	ØD	ØP	W.G(g)	Qty/Inbox
GPLL 04M3(L)	4	M3	9	3	30.3	14.5	17.1	9	8.6	10.8	1.2	9.6	100	
GPLL 04M5(L)	4	M5	9	4	30.3	14.5	17.1	9	8.6	10.8	2	9.6	100	
GPLL 04M6(L)	4	M6	9	5	31.3	14.5	17.1	9	8.6	10.8	3	10.1	100	
GPLL 0401(L)	4	R1/8	9	8	33.5	14.5	17.1	10	8.6	10.8	3.2	13.4	50	
GPLL 0402(L)	4	R1/4	9	11	36.5	14.5	17.1	14	8.6	10.8	3.2	28.2	50	
GPLL 0403(L)	4	R3/8	9	12	37.5	14.5	17.1	17	8.6	10.8	3.2	40.4	50	
GPLL 06M5(L)	6	M5	11.2	4	31.9	15.5	18	9	11	13	2	10.6	50	
GPLL 06M6(L)	6	M6	11.2	5	32.9	15.5	18	9	11	13	3	11.1	50	
GPLL 0601(L)	6	R1/8	11.2	8	35.1	15.5	18	10	11	13	4	14.4	50	
GPLL 0602(L)	6	R1/4	11.2	11	38.1	15.5	18	14	11	13	4	29.2	50	
GPLL 0603(L)	6	R3/8	11.2	12	39.1	15.5	18	17	11	13	4	41.4	50	
GPLL 0801(L)	8	R1/8	13.6	8	40.3	17.8	23.6	10	13	15	5.5	16.7	50	
GPLL 0802(L)	8	R1/4	13.6	11	42.8	17.8	23.6	14	13	15	5.5	32.4	50	
GPLL 0803(L)	8	R3/8	13.6	12	43.8	17.8	23.6	17	13	15	5.5	45.3	25	
GPLL 0804(L)	8	R1/2	13.6	15	47.8	17.8	23.6	21	13	15	5.5	76.3	20	
GPLL 1001(L)	10	R1/8	16.3	8	50.85	19.4	25	17	16	18.5	6	50.6	25	
GPLL 1002(L)	10	R1/4	16.3	11	53.85	19.4	25	17	16	18.5	8	54.6	25	
GPLL 1003(L)	10	R3/8	16.3	12	53.35	19.4	25	17	16	18.5	9	53.5	25	
GPLL 1004(L)	10	R1/2	16.3	15	56.35	19.4	25	21	16	18.5	9	86.4	20	
GPLL 1201(L)	12	R1/8	19.7	8	52.55	22.4	32.2	17	19.5	22.5	6	55.7	25	
GPLL 1202(L)	12	R1/4	19.7	11	55.55	22.4	32.2	17	19.5	22.5	8	59.7	25	
GPLL 1203(L)	12	R3/8	19.7	12	55.05	22.4	32.2	17	19.5	22.5	9.5	58.6	20	
GPLL 1204(L)	12	R1/2	19.7	15	58.05	22.4	32.2	21	19.5	22.5	9.5	91.5	20	

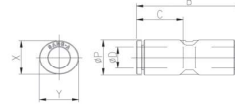
\*Hexagonal wrench may be used for a proper tightening.

MODEL [ØD-T] Tube (Metric) – Thread (R)

MODEL	ØD	ØP	B	C	X	Y	ØD	ØP	W.G(g)	Qty/Inbox
GPUC 03	3	9	30.2	14.5	8.6	10.8	2.5	3.3	100	
GPUC 04	4	9	30.2	14.5	8.6	10.8	3.2	3.1	100	
GPUC 06	6	11.2	32	15.5	11	13	5	4.8	50	
GPUC 08	8	13.6	40.2	17.8	13	15	7	8.8	50	
GPUC 10	10	16.3	40	19.4	16	18.5	9	10.6	50	
GPUC 12	12	19.7	54.8	22.4	19.5	22.5	10	20.9	25	
GPUC 14	14	23.5	50.8	24.4	23	25	12	32.7	20	
GPUC 16	16	25.6	52	25	24	27	14	32.8	20	

### GPUC

Union Straight

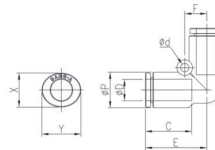


MODEL [ØD-T] Tube (Metric) – Thread (R)

MODEL	ØD	ØP	B	C	F	Ød	X	Y	ØD	ØP	W.G(g)	Qty/Inbox
GPUL 03	3	9	17.1	14.5	6	3.2	8.6	10.8	2.5	3.5	100	
GPUL 04	4	9	17.1	14.5	6	3.2	8.6	10.8	3.2	3.2	100	
GPUL 06	6	11.2	19	15.5	6.7	3.2	11	13	5	4.9	50	
GPUL 08	8	13.6	23.6	17.8	8.5	3.2	13	15	7	9.4	50	
GPUL 10	10	16.3	25	19.4	10	4.2	16	18.5	9	11.8	25	
GPUL 12	12	19.7	32.2	22.4	12	4.2	19.5	22.5	10	22.5	25	
GPUL 14	14	23.5	31.9	24.4	13.5	4.2	23	25	12	36.7	20	
GPUL 16	16	25.6	34	25	15	4.2	24	27	14	36.5	20	

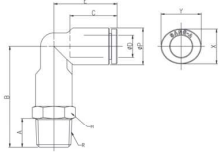
### GPUL

Union Elbow



### GPLL P

Union Straight



MODEL [ØD-T] Tube (Metric) – Thread (R)

MODEL	ØD	R	ØP	A	B	C	E	H	X	Y	ØD	ØP	W.G(g)	Qty/Inbox
GPLL P 04M5	4	M5	9	4	27.1	14.5	17.1	9	8.6	10.8	2	6.7	100	
GPLL P 04M6	4	M6	9	5	28.1	14.5	17.1	9	8.6	10.8	3	7.1	100	
GPLL P 0401	4	R1/8	9	8	30.3	14.5	17.1	10	8.6	10.8	3.2	9.1	50	
GPLL P 0402	4	R1/4	9	11	33.3	14.5	17.1	14	8.6	10.8	3.2	17.2	50	
GPLL P 0403	4	R3/8	9	12	34.3	14.5	17.1	17	8.6	10.8	3.2	24.7	50	
GPLL P 06M5	6	M5	11.2	4	28.2	15.5	18	11	11	13	2	9.6	50	
GPLL P 06M6	6	M6	11.2	5	29.2	15.5	18	11	11	13	3	10.0	50	
GPLL P 0601	6	R1/8	11.2	8	31.4	15.5	18	11	11	13	5	11.7	50	
GPLL P 0602	6	R1/4	11.2	11	34.4	15.5	18	14	11	13	5	18.9	50	
GPLL P 0603	6	R3/8	11.2	12	35.4	15.5	18	17	11	13	5	26.9	50	
GPLL P 0604	6	R1/2	11.2	15	39.4	15.5	18	21	11	13	5	45.7	25	
GPLL P 0801	8	R1/8	13.6	8	35.3	17.8	23.6	13	13	15	6	16.5	50	
GPLL P 0802	8	R1/4	13.6	11	37.8	17.8	23.6	14	13	15	7	20.7	50	
GPLL P 0803	8	R3/8	13.6	12	38.8	17.8	23.6	17	13	15	7	28.2	25	
GPLL P 0804	8	R1/2	13.6	15	42.8	17.8	23.6	21	13	15	7	47.3	25	
GPLL P 1001	10	R1/8	16.3	8	44.8	19.4	25	17	16	18.5	6	23.2	25	
GPLL P 1002	10	R1/4	16.3	11	47.8	19.4	25	17	16	18.5	8	27.4	25	
GPLL P 1003	10	R3/8	16.3	12	47.3	19.4	25	17	16	18.5	9	32.5	25	
GPLL P 1004	10	R1/2	16.3	15	50.3	19.4	25	21	16	18.5	9	49.7	20	
GPLL P 1201	12	R1/8	19.7	8	46.7	22.4	32.2	19	19.5	22.5	6	35.6	25	
GPLL P 1202	12	R1/4	19.7	11	49.7	22.4	32.2	19	19.5	22.5	8	39.9	25	
GPLL P 1203	12	R3/8	19.7	12	49.2	22.4	32.2	19	19.5	22.5	10	45.1	20	
GPLL P 1204	12	R1/2	19.7	15	52.2	22.4	32.2	21	19.5	22.5	10	59.1	20	