

Metric Size **R(PT)** Thread Type



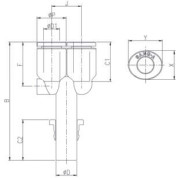
One -Touch Fittings



One -Touch Fittings

One -Touch Fittings

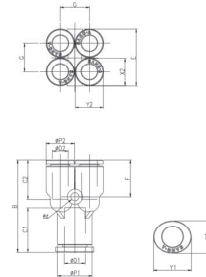
**GPWJ**  
Plug-in Reducer Y



MODEL [ØD-T] Tube(Metric)-Thread(R)

MODEL	ØD1	ØD2	ØP	B	C1	C2	F	J	X	Y	Orifice (Ømm)	W.G(g)	Qty./Inbox
GPWJ 0604	6	4	9	42.8	14.5	14.5	16	9.3	8.6	10.8	2	3.7	50
GPWJ 0806	8	6	11.2	45.5	15.5	15.5	17.2	11.4	11	13	3.5	5.8	50
GPWJ 1008	10	8	13.6	53.1	17.8	17.8	22	14.2	13	15	4.4	9.3	50
GPWJ 1210	12	10	16.3	58	19.4	19.4	22.6	17	16	18.5	5.6	14.4	25

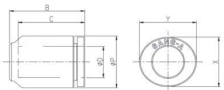
**GPXG**  
Reducer Double Y Union



MODEL [ØD-T] Tube(Metric)-Thread(R)

MODEL	ØD1	ØD2	ØP1	ØP2	B	C1	C2	E	F	G	Ød	X1	Y1	X2	Y2	Orifice (Ømm)	W.G(g)	Qty./Inbox
GPXG 0604	6	4	11.2	9	32.5	15.5	14.5	18.2	13.1	9.2	3.2	11	13	8.6	8.6	2.3	7.8	25
GPXG 0806	8	6	13.6	11.2	36.6	17.8	15.5	22.6	14.5	11.5	3.2	13	15	11	11	3.7	14.0	25

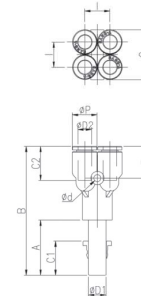
**GPPF**  
Cap



MODEL [ØD-T] Tube(Metric)-Thread(R)

MODEL	ØD	ØP	B	C	X	Y	W.G(g)	Qty./Inbox
GPPF 04	4	9	15.6	14.5	8.6	10.8	1.4	100
GPPF 06	6	11.2	17	15.5	11	13	2.2	100
GPPF 08	8	13.6	19.8	17.8	13	15	3.6	100
GPPF 10	10	16.3	21	19.4	16	18.5	5.1	50
GPPF 12	12	19.7	25.4	22.4	19.5	22.5	9.3	50

**GPXJ**  
Reducer Double Y



MODEL [ØD-T] Tube(Metric)-Thread(R)

MODEL	ØD1	ØD2	ØP	A	B	C1	C2	F	G	I	Ød	Orifice (Ømm)	W.G(g)	Qty./Inbox
GPXJ 0604	6	4	9	23	53	15.5	14.5	13.1	18.2	9.2	3.2	2.3	8.2	25
GPXJ 0806	8	6	11.2	25	58.5	17.8	15.5	14.5	22.6	11.5	3.2	3.7	13.2	25