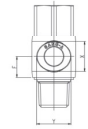
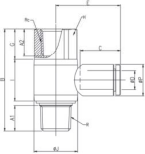


GPHF

Female Banjo



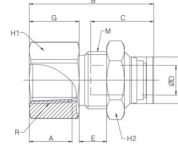
MODEL [ØD-T] Tube (Metric) – Thread (R)

MODEL	ØD	R	Rc	ØP	A1	A2	B	C	E	F	G	H	I	ØJ	X	Y	ØHole (mm)	W.G(g)	Qty./Inbox
GPHF 03M5-M5	3	M5	M5	9	3.5	5	20.8	14.5	19.5	6.6	5.5	8	11.8	10	8.6	10.8	2	6.8	100
GPHF 04M5-M5	4	M5	M5	9	3.5	5	20.8	14.5	19.5	6.6	5.5	8	11.8	10	8.6	10.8	2	6.7	100
GPHF 0401-01	4	R1/8	R1/8	9	8	9	34.5	14.5	21.5	7.3	10.5	13	14.5	14	8.6	10.8	3.2	21.2	50
GPHF 0402-02	4	R1/4	R1/4	9	11	12	44.5	14.5	24	9	13.5	17	18	19	8.6	10.8	3.2	42.0	50
GPHF 0403-03	4	R3/8	R3/8	9	12	13	50.0	14.5	25.7	10.5	15	21	21	22.4	8.6	10.8	3.2	66.8	50
GPHF 06M5-M5	6	M5	M5	11.2	3.5	5	20.8	15.5	20.5	7.1	5.5	8	11.8	10	11	13	2	7.5	50
GPHF 0601-01	6	R1/8	R1/8	11.2	8	9	34.5	15.5	22.5	7.3	10.5	13	14.5	14	11	13	5	22.0	50
GPHF 0602-02	6	R1/4	R1/4	11.2	11	12	44.5	15.5	25	9	13.5	17	18	19	11	13	5	42.8	50
GPHF 0603-03	6	R3/8	R3/8	11.2	12	13	50.8	15.5	26.7	10.5	15	21	21	22.4	11	13	5	67.5	50
GPHF 0801-01	8	R1/8	R1/8	13.6	8	9	34.5	17.8	25.6	8	10.5	13	14.5	14	13	15	6	23.2	50
GPHF 0802-02	8	R1/4	R1/4	13.6	11	12	44.5	17.8	28.1	9	13.5	17	18	19	13	15	7	44.1	50
GPHF 0803-03	8	R3/8	R3/8	13.6	12	13	50.8	17.8	29.8	10.5	15	21	21	22.4	13	15	7	68.0	25
GPHF 0804-04	8	R1/2	R1/2	13.6	15	16	58.8	17.8	32.1	11	19	24	22	27	13	15	7	106.4	25
GPHF 1002-02	10	R1/4	R1/4	16.3	11	12	44.5	19.4	28.9	9.7	13.5	17	18	19	16	18.5	8	47.3	25
GPHF 1003-03	10	R3/8	R3/8	16.3	12	13	50.8	19.4	30.6	10.5	15	21	21	22.4	16	18.5	9	70.2	25
GPHF 1004-04	10	R1/2	R1/2	16.3	15	16	58.8	19.4	32.9	11	19	24	22	27	16	18.5	9	107.6	20
GPHF 1203-03	12	R3/8	R3/8	19.7	12	13	50.8	22.4	35.9	11.9	15	21	21	22.4	19.5	22.5	9.2	74.4	20
GPHF 1204-04	12	R1/2	R1/2	19.7	15	16	58.8	22.4	38.2	11.9	19	24	22	27	19.5	22.5	9.5	111.8	20

*Rotating body construction after a proper installation.

GPMF

Bulkhead Female Straight

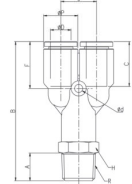


MODEL [ØD-T] Tube (Metric) – Thread (R)

MODEL	ØD	Rc	ØP	M	G	A	B	C	E	H1	H2	ØHole (mm)	W.G(g)	Qty./Inbox
GPMF 0401	4	Rc1/8	8.8	M12X1.0P	11	9	25.1	14.5	3.4	14	14	3.2	18.3	100
GPMF 0402	4	Rc1/4	8.8	M12X1.0P	14	12	28.1	14.5	3.4	17	14	3.2	26.0	50
GPMF 0403	4	Rc3/8	8.8	M12X1.0P	15	13	29.1	14.5	3.4	19	14	3.2	27.5	50
GPMF 0601	6	Rc1/8	11	M14X1.0P	9	9	26.3	15.5	6	17	17	5	26.6	50
GPMF 0602	6	Rc1/4	11	M14X1.0P	14	12	31.3	15.5	6	17	17	5	31.4	50
GPMF 0603	6	Rc3/8	11	M14X1.0P	15	13	32.3	15.5	6	19	17	5	32.9	50
GPMF 0801	8	Rc1/8	13	M16X1.0P	8	9	28.9	17.8	7.7	19	19	7	39.9	50
GPMF 0802	8	Rc1/4	13	M16X1.0P	14	12	34.9	17.8	7.7	19	19	7	44.8	50
GPMF 0803	8	Rc3/8	13	M16X1.0P	15	13	35.9	17.8	7.7	19	19	7	41.8	50
GPMF 0804	8	Rc1/2	13	M16X1.0P	18	16	38.9	17.8	7.7	24	19	7	59.7	25
GPMF 1001	10	Rc1/8	15.5	M20X1.0P	10	9	29.3	19.4	5.7	22	24	7	54.8	25
GPMF 1002	10	Rc1/4	15.5	M20X1.0P	13	12	32.3	19.4	5.7	22	24	9	59.7	25
GPMF 1003	10	Rc3/8	15.5	M20X1.0P	15	13	34.3	19.4	5.7	22	24	9	58.3	25
GPMF 1004	10	Rc1/2	15.5	M20X1.0P	18	16	37.3	19.4	5.7	24	24	9	62.1	25
GPMF 1201	12	Rc1/8	18.8	M22X1.0P	9	9	32.4	22.4	8.2	24	26	8	69.4	25
GPMF 1202	12	Rc1/4	18.8	M22X1.0P	12	12	35.4	22.4	8.2	24	26	10	76.4	25
GPMF 1203	12	Rc3/8	18.8	M22X1.0P	14	13	37.4	22.4	8.2	24	26	10	76.1	25
GPMF 1204	12	Rc1/2	18.8	M22X1.0P	18	16	41.4	22.4	8.2	24	26	10	74.1	25

GPWT

Male Y



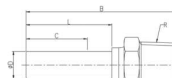
MODEL [ØD-T] Tube (Metric) – Thread (R)

MODEL	ØD	R	A	B	C	Ød	J	F	H	X	Y	ØHole (mm)	W.G(g)	Qty./Inbox	
GPWT 04M5	4	M5	9	4	37.4	14.5	3.2	9.3	13.2	9	8.6	10.8	2	8.9	50
GPWT 04M6	4	M6	9	5	38.4	14.5	3.2	9.3	13.2	9	8.6	10.8	2.1	9.4	50
GPWT 0401	4	R1/8	9	8	40.6	14.5	3.2	9.3	13.2	10	8.6	10.8	2.1	11.6	50
GPWT 0402	4	R1/4	9	11	43.6	14.5	3.2	9.3	13.2	14	8.6	10.8	2.1	20.5	50
GPWT 0403	4	R3/8	9	12	44.6	14.5	3.2	9.3	13.2	17	8.6	10.8	2.1	28.8	50
GPWT 06M5	6	M5	11.2	4	40.5	15.5	3.2	11.4	14.1	11	11	13	2	12.9	50
GPWT 06M6	6	M6	11.2	5	41.5	15.5	3.2	11.4	14.1	11	11	13	3	13.3	50
GPWT 0601	6	R1/8	11.2	8	43.7	15.5	3.2	11.4	14.1	11	11	13	3.6	15.2	50
GPWT 0602	6	R1/4	11.2	11	46.7	15.5	3.2	11.4	14.1	14	11	13	3.6	23.1	50
GPWT 0603	6	R3/8	11.2	12	47.7	15.5	3.2	11.4	14.1	17	11	13	3.6	35.2	25
GPWT 0604	6	R1/2	11.3	15	51.7	15.5	3.2	11.4	14.1	21	11	13	3.6	52.6	25
GPWT 0801	8	R1/8	13.6	8	52.6	17.8	3.2	14.2	18.6	13	13	15	5.4	23.3	50
GPWT 0802	8	R1/4	13.6	11	55.1	17.8	3.2	14.2	18.6	14	13	15	5.4	27.9	50
GPWT 0803	8	R3/8	13.6	12	56.1	17.8	3.2	14.2	18.6	17	13	15	5.4	36.2	25
GPWT 0804	8	R1/2	13.6	15	60.1	17.8	3.2	14.2	18.6	21	13	15	5.4	57.2	25
GPWT 1001	10	R1/8	16.3	8	53	19.4	4.2	17	18	17	16	18.5	6	30.6	25
GPWT 1002	10	R1/4	16.3	11	56	19.4	4.2	17	18	17	16	18.5	6.4	35.2	25
GPWT 1003	10	R3/8	16.3	12	58	19.4	4.2	17	18	17	16	18.5	6.4	40.8	25
GPWT 1004	10	R1/2	16.3	15	61	19.4	4.2	17	18	21	16	18.5	6.4	59.8	25
GPWT 1201	12	R1/8	19.7	8	62.9	22.4	4.2	20	23.9	19	19.5	22.5	6	49.0	25
GPWT 1202	12	R1/4	19.7	11	65.9	22.4	4.2	20	23.9	19	19.5	22.5	7.3	53.7	20
GPWT 1203	12	R3/8	19.7	12	67.9	22.4	4.2	20	23.9	19	19.5	22.5	7.3	59.5	20
GPWT 1204	12	R1/2	19.7	15	70.9	22.4	4.2	20	23.9	21	19.5	22.5	7.3	74.9	20

*Rotating body construction after a proper installation.

GPCJ

Plug-In Male



MODEL [ØD-T] Tube (Metric) – Thread (R)

MODEL	ØD	R	A	B	L	C	H	ØHole (mm)	W.G(g)	Qty./Inbox
GPCJ 04M5	4	M5	4	31.2	18	14.5	9	2	3.1	100
GPCJ 0401	4	R1/8	8	34.4	18	14.5	10	2.5	6.1	100
GPCJ 0402	4	R1/4	11	37.4	18	14.5	14	2.5	14.4	100
GPCJ 06M5	6	M5	4	36.2	23	15.5	9	2	3.3	100
GPCJ 0601	6	R1/8	8	39.4	23	15.5	10	4	6.3	100
GPCJ 0602	6	R1/4	11	42.2	23	15.5	14	4	14.6	50
GPCJ 0603	6	R3/8	12	43.4	23	15.5	17	4	23.1	50
GPCJ 0801	8	R1/8	8	41.5	25	17.8	10	6	6.1	50
GPCJ 0802	8	R1/4	11	44	25	17.8	14	6	14.0	50
GPCJ 0803	8	R3/8	12	45	25	17.8	17	6	22.4	50
GPCJ 1002	10	R1/4	11	49.1	27	19.4	17	8	18.8	25
GPCJ 1003	10	R3/8	12	48.6	27	19.4	17	8	20.6	25
GPCJ 1004	10	R1/2	15	51.6	27	19.4	21	8	38.5	25
GPCJ 1202	12	R1/4	11	51.1	29	22.4	17	8	19.7	25
GPCJ 1203	12	R3/8	12	50.6	29	22.4	17	9	21.5	25
GPCJ 1204	12	R1/2	15	53.6	29	22.4	21	9	39.4	25
GPCJ 1403	14	R3/8	12	56.5	30	24.4	20	11	33.1	12
GPCJ 1404	14	R1/2	15	59	30	24.4	21	11	46.1	12
GPCJ 1603	16	R3/8	12	57.5	31	25	20	11	33.7	12
GPCJ 1604	16	R1/2	15	60	31	25	21	13	46.7	12