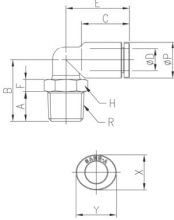


GPL
Male Elbow

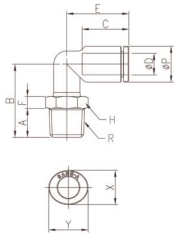


MODEL[ØD-T] Tube(Metric)-Thread(R)

| MODEL | ØD | R | ØP | A | B | C | E | F | H | X | Y | Orifice (Ømm) | W.G(g) | Qty/Inbox |
|----------|----|------|------|----|------|------|------|------|----|------|------|---------------|--------|-----------|
| GPL 03M3 | 3 | M3 | 9 | 3 | 14.6 | 14.5 | 17.1 | 5.4 | 9 | 8.6 | 10.8 | 1.2 | 4.5 | 100 |
| GPL 03M5 | 3 | M5 | 9 | 4 | 14.6 | 14.5 | 17.1 | 4.4 | 9 | 8.6 | 10.8 | 2 | 4.7 | 100 |
| GPL 03M6 | 3 | M6 | 9 | 5 | 15.6 | 14.5 | 17.1 | 4.4 | 9 | 8.6 | 10.8 | 2.5 | 5.2 | 100 |
| GPL 04M3 | 4 | M3 | 9 | 3 | 14.6 | 14.5 | 17.1 | 5.4 | 9 | 8.6 | 10.8 | 1.2 | 4.4 | 100 |
| GPL 04M5 | 4 | M5 | 9 | 4 | 14.6 | 14.5 | 17.1 | 4.4 | 9 | 8.6 | 10.8 | 2 | 4.6 | 100 |
| GPL 04M6 | 4 | M6 | 9 | 5 | 15.6 | 14.5 | 17.1 | 4.4 | 9 | 8.6 | 10.8 | 3 | 5.0 | 100 |
| GPL 0401 | 4 | R1/8 | 9 | 8 | 17.8 | 14.5 | 17.1 | 5 | 10 | 8.6 | 10.8 | 3.2 | 7.9 | 100 |
| GPL 0402 | 4 | R1/4 | 9 | 11 | 20.8 | 14.5 | 17.1 | 5 | 14 | 8.6 | 10.8 | 3.2 | 17.0 | 100 |
| GPL 0403 | 4 | R3/8 | 9 | 12 | 21.8 | 14.5 | 17.1 | 5 | 17 | 8.6 | 10.8 | 3.2 | 26.4 | 50 |
| GPL 06M5 | 6 | M5 | 11.2 | 4 | 15.7 | 15.5 | 18 | 4.4 | 9 | 11 | 13 | 2 | 5.4 | 100 |
| GPL 06M6 | 6 | M6 | 11.2 | 5 | 16.7 | 15.5 | 18 | 4.4 | 9 | 11 | 13 | 3 | 5.9 | 100 |
| GPL 0601 | 6 | R1/8 | 11.2 | 8 | 18.9 | 15.5 | 18 | 5 | 10 | 11 | 13 | 4 | 8.7 | 100 |
| GPL 0602 | 6 | R1/4 | 11.2 | 11 | 21.9 | 15.5 | 18 | 5 | 14 | 11 | 13 | 4 | 17.8 | 50 |
| GPL 0603 | 6 | R3/8 | 11.2 | 12 | 22.9 | 15.5 | 18 | 5 | 17 | 11 | 13 | 4 | 27.2 | 50 |
| GPL 0604 | 6 | R1/2 | 11.2 | 15 | 26.9 | 15.5 | 18 | 6 | 21 | 11 | 13 | 4 | 49.5 | 25 |
| GPL 0801 | 8 | R1/8 | 13.6 | 8 | 20.3 | 17.8 | 23.6 | 5 | 10 | 13 | 15 | 5.5 | 10.4 | 50 |
| GPL 0802 | 8 | R1/4 | 13.6 | 11 | 22.8 | 17.8 | 23.6 | 4.5 | 14 | 13 | 15 | 5.5 | 19.1 | 50 |
| GPL 0803 | 8 | R3/8 | 13.6 | 12 | 23.8 | 17.8 | 23.6 | 4.5 | 17 | 13 | 15 | 5.5 | 28.4 | 50 |
| GPL 0804 | 8 | R1/2 | 13.6 | 15 | 27.8 | 17.8 | 23.6 | 5.5 | 21 | 13 | 15 | 5.5 | 50.7 | 25 |
| GPL 1001 | 10 | R1/8 | 16.3 | 8 | 23.6 | 19.4 | 25 | 6.5 | 17 | 16 | 18.5 | 6 | 20.8 | 50 |
| GPL 1002 | 10 | R1/4 | 16.3 | 11 | 26.6 | 19.4 | 25 | 6.5 | 17 | 16 | 18.5 | 8 | 25.5 | 25 |
| GPL 1003 | 10 | R3/8 | 16.3 | 12 | 26.1 | 19.4 | 25 | 5 | 17 | 16 | 18.5 | 9 | 27.5 | 25 |
| GPL 1004 | 10 | R1/2 | 16.3 | 15 | 29.1 | 19.4 | 25 | 5 | 21 | 16 | 18.5 | 9 | 47.2 | 25 |
| GPL 1201 | 12 | R1/8 | 19.7 | 8 | 25.5 | 22.4 | 32.2 | 6.5 | 17 | 19.5 | 22.5 | 6 | 26.4 | 25 |
| GPL 1202 | 12 | R1/4 | 19.7 | 11 | 28.5 | 22.4 | 32.2 | 6.5 | 17 | 19.5 | 22.5 | 8 | 31.1 | 25 |
| GPL 1203 | 12 | R3/8 | 19.7 | 12 | 28 | 22.4 | 32.2 | 5 | 17 | 19.5 | 22.5 | 9.5 | 33.1 | 25 |
| GPL 1204 | 12 | R1/2 | 19.7 | 15 | 31 | 22.4 | 32.2 | 5 | 21 | 19.5 | 22.5 | 9.5 | 52.8 | 25 |
| GPL 1403 | 14 | R3/8 | 23.5 | 12 | 35 | 24.4 | 31.9 | 10.5 | 20 | 23 | 25 | 11 | 52.7 | 20 |
| GPL 1404 | 14 | R1/2 | 23.5 | 15 | 37.5 | 24.4 | 31.9 | 10 | 21 | 23 | 25 | 12 | 67.0 | 20 |
| GPL 1603 | 16 | R3/8 | 25.6 | 12 | 36 | 25 | 34 | 10.5 | 20 | 24 | 27 | 11 | 52.9 | 20 |
| GPL 1604 | 16 | R1/2 | 25.6 | 15 | 38.5 | 25 | 34 | 10 | 21 | 24 | 27 | 13 | 67.2 | 20 |

*Rotating body construction after a proper installation.

GPL(L)
Male Elbow

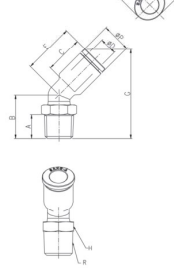


MODEL[ØD-T] Tube(Metric)-Thread(R)

| MODEL | ØD | R | ØP | A | B | C | E | F | H | X | Y | Orifice (Ømm) | W.G(g) | Qty/Inbox |
|-------------|----|------|------|----|------|------|------|-----|----|------|------|---------------|--------|-----------|
| GPL 04M3(L) | 4 | M3 | 9 | 3 | 17.8 | 14.5 | 17.1 | 5.4 | 9 | 8.6 | 10.8 | 1.2 | 4.0 | 100 |
| GPL 04M5(L) | 4 | M5 | 9 | 4 | 17.8 | 14.5 | 17.1 | 4.4 | 9 | 8.6 | 10.8 | 2 | 4.2 | 100 |
| GPL 04M6(L) | 4 | M6 | 9 | 5 | 18.8 | 14.5 | 17.1 | 4.4 | 9 | 8.6 | 10.8 | 3 | 4.6 | 100 |
| GPL 0401(L) | 4 | R1/8 | 9 | 8 | 21 | 14.5 | 17.1 | 5 | 10 | 8.6 | 10.8 | 3.2 | 7.2 | 100 |
| GPL 0402(L) | 4 | R1/4 | 9 | 11 | 24 | 14.5 | 17.1 | 5 | 14 | 8.6 | 10.8 | 3.2 | 15.5 | 100 |
| GPL 0403(L) | 4 | R3/8 | 9 | 12 | 25 | 14.5 | 17.1 | 5 | 17 | 8.6 | 10.8 | 3.2 | 24.0 | 50 |
| GPL 06M5(L) | 6 | M5 | 11.2 | 4 | 19.4 | 15.5 | 18 | 4.4 | 9 | 11 | 13 | 2 | 5.2 | 100 |
| GPL 06M6(L) | 6 | M6 | 11.2 | 5 | 20.4 | 15.5 | 18 | 4.4 | 9 | 11 | 13 | 3 | 5.6 | 100 |
| GPL 0601(L) | 6 | R1/8 | 11.2 | 8 | 22.6 | 15.5 | 18 | 5 | 10 | 11 | 13 | 4 | 8.2 | 100 |
| GPL 0602(L) | 6 | R1/4 | 11.2 | 11 | 25.6 | 15.5 | 18 | 5 | 14 | 11 | 13 | 4 | 16.5 | 50 |
| GPL 0603(L) | 6 | R3/8 | 11.2 | 12 | 26.6 | 15.5 | 18 | 5 | 17 | 11 | 13 | 4 | 25.0 | 50 |
| GPL 0604(L) | 6 | R1/2 | 11.2 | 15 | 30.6 | 15.5 | 18 | 6 | 21 | 11 | 13 | 4 | 45.3 | 25 |
| GPL 0801(L) | 8 | R1/8 | 13.6 | 8 | 25.3 | 17.8 | 23.6 | 5 | 10 | 13 | 15 | 5.5 | 9.3 | 50 |
| GPL 0802(L) | 8 | R1/4 | 13.6 | 11 | 27.8 | 17.8 | 23.6 | 4.5 | 14 | 13 | 15 | 5.5 | 17.2 | 50 |
| GPL 0803(L) | 8 | R3/8 | 13.6 | 12 | 28.8 | 17.8 | 23.6 | 4.5 | 17 | 13 | 15 | 5.5 | 25.6 | 50 |
| GPL 0804(L) | 8 | R1/2 | 13.6 | 15 | 32.8 | 17.8 | 23.6 | 5.5 | 21 | 13 | 15 | 5.5 | 45.9 | 25 |
| GPL 1001(L) | 10 | R1/8 | 16.3 | 8 | 29.7 | 19.4 | 25 | 6.5 | 17 | 16 | 18.5 | 6 | 21.9 | 50 |
| GPL 1002(L) | 10 | R1/4 | 16.3 | 11 | 32.7 | 19.4 | 25 | 6.5 | 17 | 16 | 18.5 | 8 | 26.2 | 25 |
| GPL 1003(L) | 10 | R3/8 | 16.3 | 12 | 32.2 | 19.4 | 25 | 5 | 17 | 16 | 18.5 | 9 | 28.0 | 25 |
| GPL 1004(L) | 10 | R1/2 | 16.3 | 15 | 35.2 | 19.4 | 25 | 5 | 21 | 16 | 18.5 | 9 | 45.9 | 25 |
| GPL 1201(L) | 12 | R1/8 | 19.7 | 8 | 31.4 | 22.4 | 32.2 | 6.5 | 17 | 19.5 | 22.5 | 6 | 24.6 | 25 |
| GPL 1202(L) | 12 | R1/4 | 19.7 | 11 | 34.4 | 22.4 | 32.2 | 6.5 | 17 | 19.5 | 22.5 | 8 | 28.9 | 25 |
| GPL 1203(L) | 12 | R3/8 | 19.7 | 12 | 33.9 | 22.4 | 32.2 | 5 | 17 | 19.5 | 22.5 | 9.5 | 30.7 | 25 |
| GPL 1204(L) | 12 | R1/2 | 19.7 | 15 | 36.9 | 22.4 | 32.2 | 5 | 21 | 19.5 | 22.5 | 9.5 | 48.6 | 25 |

*Rotating body construction after a proper installation.

GPL45
Male 45° Elbow



MODEL[ØD-T] Tube(Metric)-Thread(R)

| MODEL | ØD | R | ØP | A | B | C | E | H | G | X | Y | Orifice (Ømm) | W.G(g) | Qty/Inbox |
|------------|----|------|------|----|------|------|------|----|------|------|------|---------------|--------|-----------|
| GPL45 04M5 | 4 | M5 | 9.0 | 4 | 13.1 | 14.5 | 17.1 | 9 | 28.1 | 8.6 | 10.8 | 2 | 4.8 | 100 |
| GPL45 04M6 | 4 | M6 | 9.0 | 5 | 14.1 | 14.5 | 17.1 | 9 | 29.1 | 8.6 | 10.8 | 3 | 5.2 | 100 |
| GPL45 0401 | 4 | R1/8 | 9.0 | 8 | 16.3 | 14.5 | 17.1 | 10 | 31.3 | 8.6 | 10.8 | 3.2 | 7.8 | 100 |
| GPL45 0402 | 4 | R1/4 | 9.0 | 11 | 19.3 | 14.5 | 17.1 | 14 | 34.3 | 8.6 | 10.8 | 3.2 | 16.1 | 100 |
| GPL45 0403 | 4 | R3/8 | 9.0 | 12 | 20.3 | 14.5 | 17.1 | 17 | 35.3 | 8.6 | 10.8 | 3.2 | 24.6 | 50 |
| GPL45 06M5 | 4 | M5 | 11.2 | 4 | 13.7 | 15.5 | 18 | 9 | 30.1 | 11 | 13 | 2 | 5.0 | 100 |
| GPL45 06M6 | 6 | M6 | 11.2 | 5 | 14.7 | 15.5 | 18 | 9 | 31.1 | 11 | 13 | 3 | 5.4 | 100 |
| GPL45 0601 | 6 | R1/8 | 11.2 | 8 | 16.9 | 15.5 | 18 | 10 | 33.3 | 11 | 13 | 4 | 8.0 | 100 |
| GPL45 0602 | 6 | R1/4 | 11.2 | 11 | 19.9 | 15.5 | 18 | 14 | 36.3 | 11 | 13 | 4 | 16.3 | 50 |
| GPL45 0603 | 6 | R3/8 | 11.2 | 12 | 20.9 | 15.5 | 18 | 17 | 37.3 | 11 | 13 | 4 | 24.8 | 50 |
| GPL45 0604 | 6 | R1/2 | 11.2 | 15 | 24.9 | 15.5 | 18 | 21 | 41.3 | 11 | 13 | 4 | 45.1 | 50 |
| GPL45 0801 | 6 | R1/8 | 13.6 | 8 | 17.5 | 17.8 | 23.6 | 10 | 38.6 | 13 | 15 | 5.5 | 8.8 | 50 |
| GPL45 0802 | 8 | R1/4 | 13.6 | 11 | 20 | 17.8 | 23.6 | 14 | 41.1 | 13 | 15 | 5.5 | 16.7 | 50 |
| GPL45 0803 | 8 | R3/8 | 13.6 | 12 | 21 | 17.8 | 23.6 | 17 | 42.1 | 13 | 15 | 5.5 | 25.1 | 50 |
| GPL45 0804 | 8 | R1/2 | 13.6 | 15 | 25 | 17.8 | 23.6 | 21 | 46.1 | 13 | 15 | 5.5 | 45.4 | 25 |
| GPL45 1001 | 8 | R1/8 | 16.3 | 8 | 19.6 | 19.4 | 25 | 17 | 42.7 | 16 | 18.5 | 6 | 21.1 | 25 |
| GPL45 1002 | 10 | R1/4 | 16.3 | 11 | 22.6 | 19.4 | 25 | 17 | 45.7 | 16 | 18.5 | 8 | 25.4 | 25 |
| GPL45 1003 | 10 | R3/8 | 16.3 | 12 | 22.1 | 19.4 | 25 | 17 | 45.2 | 16 | 18.5 | 9 | 27.2 | 25 |
| GPL45 1004 | 10 | R1/2 | 16.3 | 15 | 25.1 | 19.4 | 25 | 21 | 48.2 | 16 | 18.5 | 9 | 45.1 | 25 |
| GPL45 1201 | 12 | R1/8 | 19.7 | 8 | 21.1 | 22.4 | 32.2 | 17 | 50.4 | 19.5 | 22.5 | 6 | 23.6 | 25 |
| GPL45 1202 | 12 | R1/4 | 19.7 | 11 | 24.1 | 22.4 | 32.2 | 17 | 53.4 | 19.5 | 22.5 | 8 | 29.7 | 25 |
| GPL45 1203 | 12 | R3/8 | 19.7 | 12 | 23.6 | 22.4 | 32.2 | 17 | 52.9 | 19.5 | 22.5 | 9.5 | 29.9 | 25 |
| GPL45 1204 | 12 | R1/2 | 19.7 | 15 | 26.6 | 22.4 | 32.2 | 21 | 55.9 | 19.5 | 22.5 | 9.5 | 47.6 | 25 |

MODEL[ØD-T] Tube(Metric)-Thread(R)

| MODEL | ØD | R | ØP | A | B | C | E | F | G | H | X | Y | Orifice (Ømm) | W.G(g) | Qty/Inbox |
|----------|----|------|----|---|------|------|------|-----|------|----|-----|------|---------------|--------|-----------|
| GPT 03M3 | 3 | M3 | 9 | 3 | 16.6 | 14.5 | 17.1 | 5.4 | 34.2 | 9 | 8.6 | 10.8 | 1.2 | 6.2 | 100 |
| GPT 03M5 | 3 | M5 | 9 | 4 | 16.6 | 14.5 | 17.1 | 4.4 | 34.2 | 9 | 8.6 | 10.8 | 2 | 6.4 | 100 |
| GPT 03M6 | 3 | M6 | 9 | 5 | 17.6 | 14.5 | 17.1 | 4.4 | 34.2 | 9 | 8.6 | 10.8 | 3 | 6.8 | 100 |
| GPT 04M3 | 4 | M3 | 9 | 3 | 16.6 | 14.5 | 17.1 | 5.4 | 34.2 | 9 | 8.6 | 10.8 | 1.2 | 6.0 | 100 |
| GPT 04M5 | 4 | M5 | 9 | 4 | 16.6 | 14.5 | 17.1 | 4.4 | 34.2 | 9 | 8.6 | 10.8 | 2 | 6.2 | 100 |
| GPT 04M6 | 4 | M6 | 9 | 5 | 17.6 | 14.5 | 17.1 | 4.4 | 34.2 | 9 | 8.6 | 10.8 | 3 | 6.7 | 100 |
| GPT 0401 | 4 | R1/8 | 9 | 8 | 19.8 | 14.5 | 17.1 | 5 | 34.2 | 10 | 8.6 | | | | |