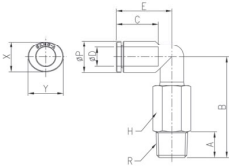


GPLL(L)

Extended Male Elbow



MODEL [ØD-T] Tube (Metric) – Thread (R)

| MODEL | ØD | R | ØP | A | B | C | E | H | X | Y | ØP | ØD | ØD | ØD |
|--------------|----|------|------|----|-------|------|------|----|------|------|-----|------|-----|----|
| GPLL 04M3(L) | 4 | M3 | 9 | 3 | 30.3 | 14.5 | 17.1 | 9 | 8.6 | 10.8 | 1.2 | 9.6 | 100 | |
| GPLL 04M5(L) | 4 | M5 | 9 | 4 | 30.3 | 14.5 | 17.1 | 9 | 8.6 | 10.8 | 2 | 9.6 | 100 | |
| GPLL 04M6(L) | 4 | M6 | 9 | 5 | 31.3 | 14.5 | 17.1 | 9 | 8.6 | 10.8 | 3 | 10.1 | 100 | |
| GPLL 0401(L) | 4 | R1/8 | 9 | 8 | 33.5 | 14.5 | 17.1 | 10 | 8.6 | 10.8 | 3.2 | 13.4 | 50 | |
| GPLL 0402(L) | 4 | R1/4 | 9 | 11 | 36.5 | 14.5 | 17.1 | 14 | 8.6 | 10.8 | 3.2 | 28.2 | 50 | |
| GPLL 0403(L) | 4 | R3/8 | 9 | 12 | 37.5 | 14.5 | 17.1 | 17 | 8.6 | 10.8 | 3.2 | 40.4 | 50 | |
| GPLL 06M5(L) | 6 | M5 | 11.2 | 4 | 31.9 | 15.5 | 18 | 9 | 11 | 13 | 2 | 10.6 | 50 | |
| GPLL 06M6(L) | 6 | M6 | 11.2 | 5 | 32.9 | 15.5 | 18 | 9 | 11 | 13 | 3 | 11.1 | 50 | |
| GPLL 0601(L) | 6 | R1/8 | 11.2 | 8 | 35.1 | 15.5 | 18 | 10 | 11 | 13 | 4 | 14.4 | 50 | |
| GPLL 0602(L) | 6 | R1/4 | 11.2 | 11 | 38.1 | 15.5 | 18 | 14 | 11 | 13 | 4 | 29.2 | 50 | |
| GPLL 0603(L) | 6 | R3/8 | 11.2 | 12 | 39.1 | 15.5 | 18 | 17 | 11 | 13 | 4 | 41.4 | 50 | |
| GPLL 0801(L) | 8 | R1/8 | 13.6 | 8 | 40.3 | 17.8 | 23.6 | 10 | 13 | 15 | 5.5 | 16.7 | 50 | |
| GPLL 0802(L) | 8 | R1/4 | 13.6 | 11 | 42.8 | 17.8 | 23.6 | 14 | 13 | 15 | 5.5 | 32.4 | 50 | |
| GPLL 0803(L) | 8 | R3/8 | 13.6 | 12 | 43.8 | 17.8 | 23.6 | 17 | 13 | 15 | 5.5 | 45.3 | 25 | |
| GPLL 0804(L) | 8 | R1/2 | 13.6 | 15 | 47.8 | 17.8 | 23.6 | 21 | 13 | 15 | 5.5 | 76.3 | 20 | |
| GPLL 1001(L) | 10 | R1/8 | 16.3 | 8 | 50.85 | 19.4 | 25 | 17 | 16 | 18.5 | 6 | 50.6 | 25 | |
| GPLL 1002(L) | 10 | R1/4 | 16.3 | 11 | 53.85 | 19.4 | 25 | 17 | 16 | 18.5 | 8 | 54.6 | 25 | |
| GPLL 1003(L) | 10 | R3/8 | 16.3 | 12 | 53.35 | 19.4 | 25 | 17 | 16 | 18.5 | 9 | 53.5 | 25 | |
| GPLL 1004(L) | 10 | R1/2 | 16.3 | 15 | 56.35 | 19.4 | 25 | 21 | 16 | 18.5 | 9 | 86.4 | 20 | |
| GPLL 1201(L) | 12 | R1/8 | 19.7 | 8 | 52.55 | 22.4 | 32.2 | 17 | 19.5 | 22.5 | 6 | 55.7 | 25 | |
| GPLL 1202(L) | 12 | R1/4 | 19.7 | 11 | 55.55 | 22.4 | 32.2 | 17 | 19.5 | 22.5 | 8 | 59.7 | 25 | |
| GPLL 1203(L) | 12 | R3/8 | 19.7 | 12 | 55.05 | 22.4 | 32.2 | 17 | 19.5 | 22.5 | 9.5 | 58.6 | 20 | |
| GPLL 1204(L) | 12 | R1/2 | 19.7 | 15 | 58.05 | 22.4 | 32.2 | 21 | 19.5 | 22.5 | 9.5 | 91.5 | 20 | |

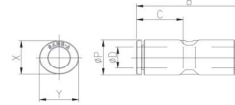
*Hexagonal wrench may be used for a proper tightening.

MODEL [ØD-T] Tube (Metric) – Thread (R)

| MODEL | ØD | ØP | B | C | X | Y | ØP | ØD | ØD | ØD |
|---------|----|------|------|------|------|------|-----|------|-----|----|
| GPUC 03 | 3 | 9 | 30.2 | 14.5 | 8.6 | 10.8 | 2.5 | 3.3 | 100 | |
| GPUC 04 | 4 | 9 | 30.2 | 14.5 | 8.6 | 10.8 | 3.2 | 3.1 | 100 | |
| GPUC 06 | 6 | 11.2 | 32 | 15.5 | 11 | 13 | 5 | 4.8 | 50 | |
| GPUC 08 | 8 | 13.6 | 40.2 | 17.8 | 13 | 15 | 7 | 8.8 | 50 | |
| GPUC 10 | 10 | 16.3 | 40 | 19.4 | 16 | 18.5 | 9 | 10.6 | 50 | |
| GPUC 12 | 12 | 19.7 | 54.8 | 22.4 | 19.5 | 22.5 | 10 | 20.9 | 25 | |
| GPUC 14 | 14 | 23.5 | 50.8 | 24.4 | 23 | 25 | 12 | 32.7 | 20 | |
| GPUC 16 | 16 | 25.6 | 52 | 25 | 24 | 27 | 14 | 32.8 | 20 | |

GPUC

Union Straight

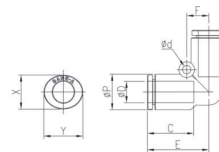


MODEL [ØD-T] Tube (Metric) – Thread (R)

| MODEL | ØD | ØP | B | C | F | Ød | X | Y | ØP | ØD | ØD | ØD |
|---------|----|------|------|------|------|-----|------|------|-----|------|-----|----|
| GPUL 03 | 3 | 9 | 17.1 | 14.5 | 6 | 3.2 | 8.6 | 10.8 | 2.5 | 3.5 | 100 | |
| GPUL 04 | 4 | 9 | 17.1 | 14.5 | 6 | 3.2 | 8.6 | 10.8 | 3.2 | 3.2 | 100 | |
| GPUL 06 | 6 | 11.2 | 19 | 15.5 | 6.7 | 3.2 | 11 | 13 | 5 | 4.9 | 50 | |
| GPUL 08 | 8 | 13.6 | 23.6 | 17.8 | 8.5 | 3.2 | 13 | 15 | 7 | 9.4 | 50 | |
| GPUL 10 | 10 | 16.3 | 25 | 19.4 | 10 | 4.2 | 16 | 18.5 | 9 | 11.8 | 25 | |
| GPUL 12 | 12 | 19.7 | 32.2 | 22.4 | 12 | 4.2 | 19.5 | 22.5 | 10 | 22.5 | 25 | |
| GPUL 14 | 14 | 23.5 | 31.9 | 24.4 | 13.5 | 4.2 | 23 | 25 | 12 | 36.7 | 20 | |
| GPUL 16 | 16 | 25.6 | 34 | 25 | 15 | 4.2 | 24 | 27 | 14 | 36.5 | 20 | |

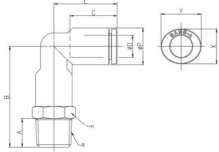
GPUL

Union Elbow



GPLL P

Union Straight



MODEL [ØD-T] Tube (Metric) – Thread (R)

| MODEL | ØD | R | ØP | A | B | C | E | H | X | Y | ØP | ØD | ØD | ØD |
|-------------|----|------|------|----|------|------|------|----|------|------|-----|------|-----|----|
| GPLL P 04M5 | 4 | M5 | 9 | 4 | 27.1 | 14.5 | 17.1 | 9 | 8.6 | 10.8 | 2 | 6.7 | 100 | |
| GPLL P 04M6 | 4 | M6 | 9 | 5 | 28.1 | 14.5 | 17.1 | 9 | 8.6 | 10.8 | 3 | 7.1 | 100 | |
| GPLL P 0401 | 4 | R1/8 | 9 | 8 | 30.3 | 14.5 | 17.1 | 10 | 8.6 | 10.8 | 3.2 | 9.1 | 50 | |
| GPLL P 0402 | 4 | R1/4 | 9 | 11 | 33.3 | 14.5 | 17.1 | 14 | 8.6 | 10.8 | 3.2 | 17.2 | 50 | |
| GPLL P 0403 | 4 | R3/8 | 9 | 12 | 34.3 | 14.5 | 17.1 | 17 | 8.6 | 10.8 | 3.2 | 24.7 | 50 | |
| GPLL P 06M5 | 6 | M5 | 11.2 | 4 | 28.2 | 15.5 | 18 | 11 | 11 | 13 | 2 | 9.6 | 50 | |
| GPLL P 06M6 | 6 | M6 | 11.2 | 5 | 29.2 | 15.5 | 18 | 11 | 11 | 13 | 3 | 10.0 | 50 | |
| GPLL P 0601 | 6 | R1/8 | 11.2 | 8 | 31.4 | 15.5 | 18 | 11 | 11 | 13 | 5 | 11.7 | 50 | |
| GPLL P 0602 | 6 | R1/4 | 11.2 | 11 | 34.4 | 15.5 | 18 | 14 | 11 | 13 | 5 | 18.9 | 50 | |
| GPLL P 0603 | 6 | R3/8 | 11.2 | 12 | 35.4 | 15.5 | 18 | 17 | 11 | 13 | 5 | 26.9 | 50 | |
| GPLL P 0604 | 6 | R1/2 | 11.2 | 15 | 39.4 | 15.5 | 18 | 21 | 11 | 13 | 5 | 45.7 | 25 | |
| GPLL P 0801 | 8 | R1/8 | 13.6 | 8 | 35.3 | 17.8 | 23.6 | 13 | 13 | 15 | 6 | 16.5 | 50 | |
| GPLL P 0802 | 8 | R1/4 | 13.6 | 11 | 37.8 | 17.8 | 23.6 | 14 | 13 | 15 | 7 | 20.7 | 50 | |
| GPLL P 0803 | 8 | R3/8 | 13.6 | 12 | 38.8 | 17.8 | 23.6 | 17 | 13 | 15 | 7 | 28.2 | 25 | |
| GPLL P 0804 | 8 | R1/2 | 13.6 | 15 | 42.8 | 17.8 | 23.6 | 21 | 13 | 15 | 7 | 47.3 | 25 | |
| GPLL P 1001 | 10 | R1/8 | 16.3 | 8 | 44.8 | 19.4 | 25 | 17 | 16 | 18.5 | 6 | 23.2 | 25 | |
| GPLL P 1002 | 10 | R1/4 | 16.3 | 11 | 47.8 | 19.4 | 25 | 17 | 16 | 18.5 | 8 | 27.4 | 25 | |
| GPLL P 1003 | 10 | R3/8 | 16.3 | 12 | 47.3 | 19.4 | 25 | 17 | 16 | 18.5 | 9 | 32.5 | 25 | |
| GPLL P 1004 | 10 | R1/2 | 16.3 | 15 | 50.3 | 19.4 | 25 | 21 | 16 | 18.5 | 9 | 49.7 | 20 | |
| GPLL P 1201 | 12 | R1/8 | 19.7 | 8 | 46.7 | 22.4 | 32.2 | 19 | 19.5 | 22.5 | 6 | 35.6 | 25 | |
| GPLL P 1202 | 12 | R1/4 | 19.7 | 11 | 49.7 | 22.4 | 32.2 | 19 | 19.5 | 22.5 | 8 | 39.9 | 25 | |
| GPLL P 1203 | 12 | R3/8 | 19.7 | 12 | 49.2 | 22.4 | 32.2 | 19 | 19.5 | 22.5 | 10 | 45.1 | 20 | |
| GPLL P 1204 | 12 | R1/2 | 19.7 | 15 | 52.2 | 22.4 | 32.2 | 21 | 19.5 | 22.5 | 10 | 59.1 | 20 | |