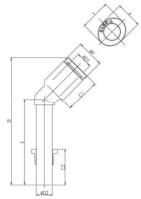


### GPLLJ45

Plug-in Reducer Elbow

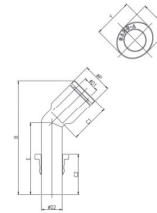


MODEL [ØD-T] Tube(Metric)-Thread(R)

MODEL	ØD1	ØD2	ØP	B	C1	C2	E	X	Y	Orifice (mm)	W.G(g)	Qty/Inbox
GPLLJ45 04	4	4	9	45	14.5	14.5	30	8.6	10.8	2	1.9	100
GPLLJ45 06	6	6	11.2	54.4	15.5	15.5	38	11	13	4	3.1	50
GPLLJ45 08	8	8	13.6	64.1	17.8	17.8	43	13	15	6	5.1	50
GPLLJ45 10	10	10	16.3	71.1	19.4	19.4	48	16	18.5	8	7.4	25
GPLLJ45 12	12	12	19.7	83.3	22.4	22.4	54	19.5	22.5	9	13.9	25

### GPLGJ45

Plug-in Reducer Elbow

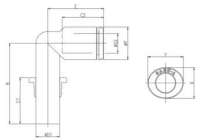


MODEL [ØD-T] Tube(Metric)-Thread(R)

MODEL	ØD1	ØD2	ØP	B	C1	C2	E	X	Y	Orifice (mm)	W.G(g)	Qty/Inbox
GPLGJ45 0604	4	6	9	40	14.5	15.5	25	8.6	10.8	3.2	2.0	100
GPLGJ45 0806	6	8	11.2	43.9	15.5	17.8	27.5	11	13	4	3.1	50
GPLGJ45 1008	8	10	13.6	51.1	17.8	19.4	30	13	15	6	4.9	25
GPLGJ45 1210	10	12	16.3	55.6	19.4	22.4	32.5	16	18.5	8	8.2	25

### GPLGJ

Plug-in Reducer Elbow

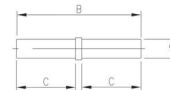


MODEL [ØD-T] Tube(Metric)-Thread(R)

MODEL	ØD1	ØD2	ØP	B	C1	C2	E	X	Y	Orifice (mm)	W.G(g)	Qty/Inbox
GPLGJ 0604	6	4	9	28.5	15.5	14.5	17.1	8.6	10.8	3.2	2.1	50
GPLGJ 0806	8	6	11.2	30.6	17.8	15.5	18	11	13	5	3.2	50
GPLGJ 1008	10	8	13.6	33.8	19.4	17.8	23.6	13	15	7	5.4	50
GPLGJ 1210	12	10	16.3	38.2	22.4	19.4	25	16	18.5	9	8.1	25

### PIJ

Tube Splicer



MODEL [ØD-T] Tube(Metric)-Thread(R)

MODEL	ØD	B	C	Orifice (mm)	W.G(g)	Qty/Inbox
PIJ 04	4	37.5	17.75	2	0.5	100
PIJ 06	6	39.5	18.75	4	0.9	100
PIJ 08	8	43.2	20.6	5	1.7	50
PIJ 10	10	47	22.5	6.5	3	50
PIJ 12	12	52.8	25.4	8	4.4	50
PIJ 16	16	60	29	13	8.5	50