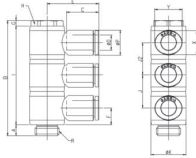


**GPH(ØD)-G**  
Triple Universal Elbow



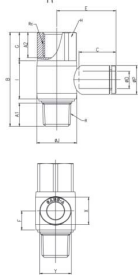
MODEL [ØD-T] Tube (Metric) - Thread (G)

MODEL	ØD	R	ØP	A	B	C	E	F	G	H	I	J	J2	ØK	X	Y	Orifice (mm)	W (G)	Qty./Inbox
GPH 04G01(3)	4	G1/8	9	5	51	14.5	21.5	7.3	2.5	13	43.5	14.5	14.5	14	8.6	10.8	3.2	30.7	25
GPH 04G02(3)	4	G1/4	9	6	63	14.5	24	9	3	16	54	18	18	19	8.6	10.8	3.2	53.4	25
GPH 04G03(3)	4	G3/8	9	7	74	14.5	25.7	10.5	4	20	63	21	21	22.4	8.6	10.8	3.2	86.8	25
GPH 06G01(3)	6	G1/8	11.2	5	51	15.5	22.5	7.3	2.5	13	43.5	14.5	14.5	14	11	13	5	33.0	25
GPH 06G02(3)	6	G1/4	11.2	6	63	15.5	25	9	3	16	54	18	18	19	11	13	5	55.7	25
GPH 06G03(3)	6	G3/8	11.2	7	74	15.5	26.7	10.5	4	20	63	21	21	22.4	11	13	5	89.1	25
GPH 08G01(3)	8	G1/8	13.6	5	51	17.8	25.6	8	2.5	13	43.5	14.5	14.5	14	13	15	6	36.7	25
GPH 08G02(3)	8	G1/4	13.6	6	63	17.8	28.1	9	3	16	54	18	18	19	13	15	7	59.6	25
GPH 08G03(3)	8	G3/8	13.6	7	74	17.8	29.8	10.5	4	20	63	21	21	22.4	13	15	7	90.4	20
GPH 08G04(3)	8	G1/2	13.6	8.5	79.5	17.8	32.1	11	5	24	66	22	22	27	13	15	7	148.5	20
GPH 10G02(3)	10	G1/4	16.3	6	63	19.4	28.9	9.7	3	16	54	18	18	19	16	18.5	8	68.1	12
GPH 10G03(3)	10	G3/8	16.3	7	74	19.4	30.6	10.5	4	20	63	21	21	22.4	16	18.5	9	97.0	12
GPH 10G04(3)	10	G1/2	16.3	8.5	79.5	19.4	32.9	11	5	24	66	22	22	27	16	18.5	9	152.1	12
GPH 12G03(3)	12	G3/8	19.7	7	74	22.4	35.9	11.9	4	20	63	21	21	22.4	19.5	22.5	9.2	109.7	9
GPH 12G04(3)	12	G1/2	19.7	8.5	79.5	22.4	38.2	11.9	5	24	66	22	22	27	19.5	22.5	9.5	164.9	9

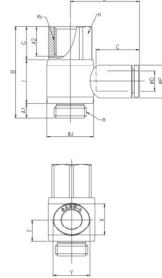
MODEL [ØD-T] Tube (Metric) - Thread (G)

MODEL	ØD	R	Rc	ØP	A1	A2	B	C	E	F	G	H	I	ØJ	X	Y	Orifice (mm)	W (G)	Qty./Inbox
GPHF 0401-G01	4	R1/8	G1/8	9	8	9	34.5	14.5	21.5	7.3	10.5	13	14.5	14	8.6	10.8	3.2	20.9	50
GPHF 0402-G02	4	R1/4	G1/4	9	11	12	44.5	14.5	24	9	13.5	17	18	19	8.6	10.8	3.2	41.3	50
GPHF 0403-G03	4	R3/8	G3/8	9	12	13	50.8	14.5	25.7	10.5	15	21	21	22.4	8.6	10.8	3.2	65.8	50
GPHF 0601-G01	6	R1/8	G1/8	11.2	8	9	34.5	15.5	22.5	7.3	10.5	13	14.5	14	11	13	5	21.7	50
GPHF 0602-G02	6	R1/4	G1/4	11.2	11	12	44.5	15.5	25	9	13.5	17	18	19	11	13	5	42.1	50
GPHF 0603-G03	6	R3/8	G3/8	11.2	12	13	50.8	15.5	26.7	10.5	15	21	21	22.4	11	13	5	66.5	50
GPHF 0801-G01	8	R1/8	G1/8	13.6	8	9	34.5	17.8	25.6	8	10.5	13	14.5	14	13	15	6	22.9	50
GPHF 0802-G02	8	R1/4	G1/4	13.6	11	12	44.5	17.8	28.1	9	13.5	17	18	19	13	15	7	43.4	50
GPHF 0803-G03	8	R3/8	G3/8	13.6	12	13	50.8	17.8	29.8	10.5	15	21	21	22.4	13	15	7	67.0	25
GPHF 0804-G04	8	R1/2	G1/2	13.6	15	16	58.8	17.8	32.1	11	19	24	22	27	13	15	7	104.4	25
GPHF 1002-G02	10	R1/4	G1/4	16.3	11	12	44.5	19.4	28.9	9.7	13.5	17	18	19	16	18.5	8	46.6	25
GPHF 1003-G03	10	R3/8	G3/8	16.3	12	13	50.8	19.4	30.6	10.5	15	21	21	22.4	16	18.5	9	69.2	25
GPHF 1004-G04	10	R1/2	G1/2	16.3	15	16	58.8	19.4	32.9	11	19	24	22	27	16	18.5	9	105.6	20
GPHF 1203-G03	12	R3/8	G3/8	19.7	12	13	50.8	22.4	35.9	11.9	15	21	21	22.4	19.5	22.5	9.2	73.4	20
GPHF 1204-G04	12	R1/2	G1/2	19.7	15	16	58.8	22.4	38.2	11.9	19	24	22	27	19.5	22.5	9.5	109.8	20

**GPHF-G**  
Female Banjo



**GPHF-GG**  
Female Banjo



MODEL [ØD-T] Tube (Metric) - Thread (G)

MODEL	ØD	R	Rc	ØP	A1	A2	B	C	E	F	G	H	I	ØJ	X	Y	Orifice (mm)	W (G)	Qty./Inbox
GPHF 04G01-G01	4	G1/8	G1/8	9	5	9	30	14.5	21.5	7.3	10.5	13	14.5	14	8.6	10.8	3.2	18.3	50
GPHF 04G02-G02	4	G1/4	G1/4	9	6	12	37.5	14.5	24	9	13.5	16	18	19	8.6	10.8	3.2	32.0	50
GPHF 04G03-G03	4	G3/8	G3/8	9	7	13	43	14.5	25.7	10.5	15	20	21	22.4	8.6	10.8	3.2	51.1	50
GPHF 06G01-G01	6	G1/8	G1/8	11.2	5	9	30	15.5	22.5	7.3	10.5	13	14.5	14	11	13	5	19.1	50
GPHF 06G02-G02	6	G1/4	G1/4	11.2	6	12	37.5	15.5	25	9	13.5	16	18	19	11	13	5	32.8	50
GPHF 06G03-G03	6	G3/8	G3/8	11.2	7	13	43	15.5	26.7	10.5	15	20	21	22.4	11	13	5	51.8	50
GPHF 08G01-G01	8	G1/8	G1/8	13.6	5	9	30	17.8	25.6	8	10.5	13	14.5	14	13	15	6	20.3	50
GPHF 08G02-G02	8	G1/4	G1/4	13.6	6	12	37.5	17.8	28.1	9	13.5	16	18	19	13	15	7	34.1	50
GPHF 08G03-G03	8	G3/8	G3/8	13.6	7	13	43	17.8	29.8	10.5	15	20	21	22.4	13	15	7	52.3	25
GPHF 08G04-G04	8	G1/2	G1/2	13.6	8.5	16	49.5	17.8	32.1	11	19	24	22	27	13	15	7	89.1	25
GPHF 10G02-G02	10	G1/4	G1/4	16.3	6	12	37.5	19.4	28.9	9.7	13.5	16	18	19	16	18.5	8	37.2	25
GPHF 10G03-G03	10	G3/8	G3/8	16.3	7	13	43	19.4	30.6	10.5	15	20	21	22.4	16	18.5	9	54.5	25
GPHF 10G04-G04	10	G1/2	G1/2	16.3	8.5	16	49.5	19.4	32.9	11	19	24	22	27	16	18.5	9	90.3	20
GPHF 12G03-G03	12	G3/8	G3/8	19.7	7	13	43	22.4	35.9	11.9	15	20	21	22.4	19.5	22.5	9.2	58.7	20
GPHF 12G04-G04	12	G1/2	G1/2	19.7	8.5	16	49.5	22.4	38.2	11.9	19	24	22	27	19.5	22.5	9.5	94.6	20

MODEL [ØD-T] Tube (Metric) - Thread (G)

MODEL	ØD	R	ØP	A	B	C	Ød	J	F	H	X	Y	Orifice (mm)	W (G)	Qty./Inbox
GPWT 04G01	4	G1/8	9	5	37.4	14.5	3.2	9.3	13.2	13	8.6	10.8	2.1	11.7	50
GPWT 04G02	4	G1/4	9	6	38.1	14.5	3.2	9.3	13.2	16	8.6	10.8	2.1	16.5	50
GPWT 04G03	4	G3/8	9	7	34.6	14.5	3.2	9.3	13.2	20	8.6	10.8	2.1	24.2	50
GPWT 06G01	6	G1/8	11.2	5	40.5	15.5	3.2	11.4	14.1	13	11	13	3.6	14.2	50
GPWT 06G02	6	G1/4	11.2	6	41.2	15.5	3.2	11.4	14.1	16	11	13	3.6	19.0	50
GPWT 06G03	6	G3/8	11.2	7	42.7	15.5	3.2	11.4	14.1	20	11	13	3.6	26.4	25
GPWT 06G04	6	G1/2	11.2	8.5	44.7	15.5	3.2	11.4	14.1	24	11	13	3.6	43.2	25
GPWT 08G01	8	G1/8	13.6	5	48.9	17.8	3.2	14.2	18.6	13	13	15	5.4	20.1	50
GPWT 08G02	8	G1/4	13.6	6	50.1	17.8	3.2	14.2	18.6	16	13	15	5.4	24.9	50
GPWT 08G03	8	G3/8	13.6	7	51.1	17.8	3.2	14.2	18.6	20	13	15	5.4	31.4	25
GPWT 08G04	8	G1/2	13.6	8.5	53.1	17.8	3.2	14.2	18.6	24	13	15	5.4	47.3	25
GPWT 10G01	10	G1/8	16.3	5	53.8	19.4	4.2	17	18	17	16	18.5	6	33.1	25
GPWT 10G02	10	G1/4	16.3	6	54.5	19.4	4.2	17	18	17	16	18.5	6.4	35.6	25
GPWT 10G03	10	G3/8	16.3	7	53	19.4	4.2	17	18	20	16	18.5	6.4	36.4	25
GPWT 10G04	10	G1/2	16.3	8.5	54.5	19.4	4.2	17	18	24	16	18.5	6.4	51.2	25
GPWT 12G01	12	G1/8	19.7	5	63.7	22.4	4.2	20	23.9	19	19.5	22.5	6	54.0	25
GPWT 12G02	12	G1/4	19.7	6	64.4	22.4	4.2	20	23.9	19	19.5	22.5	7.3	56.3	20
GPWT 12G03	12	G3/8	19.7	7	62.9	22.4	4.2	20	23.9	20	19.5	22.5	7.3	52.5	20
GPWT 12G04	12	G1/2	19.7	8.5	64.4	22.4	4.2	20	23.9	24	19.5	22.5	7.3	69.0	20

**GPWT-G**  
Male Y

