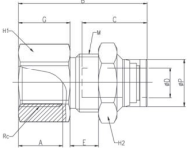


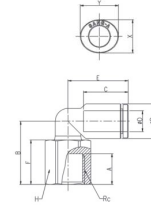
**GPMF-G**  
Bulkhead Female Straight



MODEL [ØD-T] Tube(Metric) – Thread(G)

MODEL	ØD	R	ØP	M	G	A	B	C	E	H1	H2	Orifice (mm)	W.G(g)	Qty./Pcs.
GPMF 04G01	4	G1/8	8.8	M12X1.0P	11	9	25.1	14.5	3.4	14	14	3.2	18.0	100
GPMF 04G02	4	G1/4	8.8	M12X1.0P	14	12	28.1	14.5	3.4	16	14	3.2	22.3	50
GPMF 04G03	4	G3/8	8.8	M12X1.0P	15	13	29.1	14.5	3.4	19	14	3.2	26.6	50
GPMF 06G01	6	G1/8	11	M14X1.0P	9	9	26.3	15.5	6	16	17	5	24.5	50
GPMF 06G02	6	G1/4	11	M14X1.0P	14	12	31.3	15.5	6	16	17	5	27.8	50
GPMF 06G03	6	G3/8	11	M14X1.0P	15	13	32.3	15.5	6	19	17	5	32.1	50
GPMF 08G01	8	G1/8	13	M16X1.0P	8	9	28.9	17.8	7.7	19	19	7	39.7	50
GPMF 08G02	8	G1/4	13	M16X1.0P	14	12	34.9	17.8	7.7	19	19	7	44.2	50
GPMF 08G03	8	G3/8	13	M16X1.0P	15	13	35.9	17.8	7.7	19	19	7	49.9	50
GPMF 08G04	8	G1/2	13	M16X1.0P	18	16	38.9	17.8	7.7	24	19	7	58.3	25
GPMF 10G01	10	G1/8	15.5	M20X1.0P	10	9	29.3	19.4	5.7	22	24	7	54.5	25
GPMF 10G02	10	G1/4	15.5	M20X1.0P	13	12	32.3	19.4	5.7	22	24	9	59.2	25
GPMF 10G03	10	G3/8	15.5	M20X1.0P	15	13	34.3	19.4	5.7	22	24	9	57.4	25
GPMF 10G04	10	G1/2	15.5	M20X1.0P	18	16	37.3	19.4	5.7	24	24	9	60.6	25
GPMF 12G01	12	G1/8	18.8	M22X1.0P	9	9	32.4	22.4	8.2	24	26	8	59.1	25
GPMF 12G02	12	G1/4	18.8	M22X1.0P	12	12	35.4	22.4	8.2	24	26	10	75.8	25
GPMF 12G03	12	G3/8	18.8	M22X1.0P	14	13	37.4	22.4	8.2	24	26	10	75.2	25
GPMF 12G04	12	G1/2	18.8	M22X1.0P	18	16	41.4	22.4	8.2	24	26	10	72.6	25

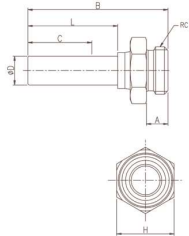
**GPLF-G**  
Female Elbow



MODEL [ØD-T] Tube(Metric) – Thread(G)

MODEL	ØD	R	ØP	A	B	C	E	F	H	X	Y	Orifice (mm)	W.G(g)	Qty./Pcs.
GPLF 04G01	4	G1/8	9	9	18.6	14.5	17.1	13.8	13	8.6	10.8	3.2	14.4	100
GPLF 04G02	4	G1/4	9	12	21.6	14.5	17.1	16.8	16	8.6	10.8	3.2	23.4	50
GPLF 06G01	6	G1/8	11.2	9	19.7	15.5	18	13.8	13	11	13	4	15.2	100
GPLF 06G02	6	G1/4	11.2	12	22.7	15.5	18	16.8	16	11	13	4	24.2	50
GPLF 06G03	6	G3/8	11.2	13	23.7	15.5	18	17.8	19	11	13	4	31.5	25
GPLF 08G01	8	G1/8	13.6	9	21.7	17.8	23.6	14.4	13	13	15	5.5	17.6	50
GPLF 08G02	8	G1/4	13.6	12	24.7	17.8	23.6	17.4	16	13	15	5.5	27.0	50
GPLF 08G03	8	G3/8	13.6	13	25.7	17.8	23.6	18.4	19	13	15	5.5	34.8	25
GPLF 10G02	10	G1/4	16.3	12	26	19.4	25	16.9	16	16	18.5	9	25.5	25
GPLF 10G03	10	G3/8	16.3	13	27	19.4	25	17.9	19	16	18.5	9	32.9	25
GPLF 10G04	10	G1/2	16.3	16	30	19.4	25	20.9	24	16	18.5	9	58.1	25
GPLF 12G02	12	G1/4	19.7	12	27.9	22.4	32.2	16.9	16	19.5	22.5	9.5	31.1	25
GPLF 12G03	12	G3/8	19.7	13	28.9	22.4	32.2	17.9	19	19.5	22.5	9.5	38.5	20
GPLF 12G04	12	G1/2	19.7	16	31.9	22.4	32.2	20.9	24	19.5	22.5	9.5	63.7	20

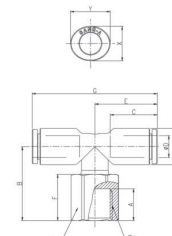
**GPCJ-G**  
Plug-In Male



MODEL [ØD-T] Tube(Metric) – Thread(G)

MODEL	ØD	Rc	A	B	L	C	H	Orifice (mm)	W.G(g)	Qty./Pcs.
GPCJ 04G01	4	G1/8	5	31.2	18	14.5	13	2.5	6.2	100
GPCJ 04G02	4	G1/4	6	31.9	18	14.5	16	2.5	11.1	100
GPCJ 06G01	6	G1/8	5	36.2	23	15.5	13	4	6.4	100
GPCJ 06G02	6	G1/4	6	36.9	23	15.5	16	4	11.3	50
GPCJ 06G03	6	G3/8	7	38.4	23	15.5	20	4	19.5	50
GPCJ 08G01	8	G1/8	5	40.8	25	17.8	13	6	8.7	50
GPCJ 08G02	8	G1/4	6	39	25	17.8	16	6	11.2	50
GPCJ 08G03	8	G3/8	7	40	25	17.8	20	6	18.5	50
GPCJ 10G02	10	G1/4	6	45.1	27	19.4	16	8	13.9	25
GPCJ 10G03	10	G3/8	7	43.6	27	19.4	20	8	17.0	25
GPCJ 10G04	10	G1/2	8.5	45.1	27	19.4	24	8	30.7	25
GPCJ 12G02	12	G1/4	6	47.1	29	22.4	16	8	14.8	25
GPCJ 12G03	12	G3/8	7	45.6	29	22.4	20	9	17.9	25
GPCJ 12G04	12	G1/2	8.5	47.1	29	22.4	24	9	31.6	25
GPCJ 14G03	14	G3/8	7	52	30	24.4	20	11	26.1	12
GPCJ 14G04	14	G1/2	8.5	47.5	30	24.4	24	11	25.7	12
GPCJ 16G03	16	G3/8	7	53	31	25	20	11	26.7	12
GPCJ 16G04	16	G1/2	8.5	48.5	31	25	24	13	26.3	12

**GPTE-G**  
Female Branch Tee



MODEL [ØD-T] Tube(Metric) – Thread(G)

MODEL	ØD	R	ØP	A	B	C	E	F	G	H	X	Y	Orifice (mm)	W.G(g)	Qty./Pcs.
GPTE 04G01	4	G1/8	9	9	20.6	14.5	17.1	13.8	34.2	13	8.6	10.8	3.2	16.0	100
GPTE 04G02	4	G1/4	9	12	23.6	14.5	17.1	16.8	34.2	16	8.6	10.8	3.2	25.0	50
GPTE 06G01	6	G1/8	11.2	9	21.7	5.5	18	13.8	35.9	13	11	11	4	17.5	50
GPTE 06G02	6	G1/4	11.2	12	24.7	5.5	18	16.8	35.9	16	11	11	4	26.6	50
GPTE 06G03	6	G3/8	11.2	13	25.7	5.5	18	17.8	35.9	19	11	11	4	33.8	15
GPTE 08G01	8	G1/8	13.6	9	24.9	17.8	23.6	14.4	47.2	13	13	13	5.5	22.1	50
GPTE 08G02	8	G1/4	13.6	12	27.9	17.8	23.6	17.4	47.2	16	13	13	5.5	31.5	50
GPTE 08G03	8	G3/8	13.6	13	28.9	17.8	23.6	18.4	47.2	19	13	13	5.5	39.4	15
GPTE 10G02	10	G1/4	16.3	12	28.2	19.4	25	16.9	50	16	16	16	9	31.0	25
GPTE 10G03	10	G3/8	16.3	13	29.2	19.4	25	17.9	50	19	16	16	9	38.4	15
GPTE 10G04	10	G1/2	16.3	16	32.2	19.4	25	20.9	50	24	16	16	9	63.6	15
GPTE 12G02	12	G1/4	19.7	12	29.9	22.4	32.2	16.9	64.4	16	19.5	19.5	9.5	41.7	20
GPTE 12G03	12	G3/8	19.7	13	30.9	22.4	32.2	17.9	64.4	19	19.5	19.5	9.5	49.1	15
GPTE 12G04	12	G1/2	19.7	16	33.9	22.4	32.2	20.9	64.4	24	19.5	19.5	9.5	74.3	15