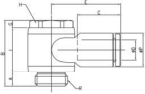
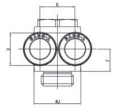


**GPA-G**  
Double Branch A



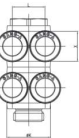
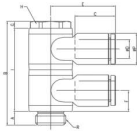
MODEL [ØD-T] Tube (Metric) - Thread (G)

MODEL	ØD	R	ØP	A	B	C	E	F	G	H	I	ØJ	K	X	Orifice (mm)	W (g)	Qty. / Pkbox
GPA 04G01	4	G1/8	9	5	22	14.5	20.6	7.3	2.5	13	14.5	14	9.3	8.6	3.2	14.9	50
GPA 04G02	4	G1/4	9	6	27	14.5	22.6	9	3	16	18	19	9.3	8.6	3.2	25.5	50
GPA 04G03	4	G3/8	9	7	32	14.5	24.6	10.5	4	20	21	22.4	9.3	8.6	3.2	42.9	25
GPA 06G01	6	G1/8	11.2	5	22	15.5	22	7.3	2.5	13	14.5	14	11.4	11	5	16.6	50
GPA 06G02	6	G1/4	11.2	6	27	15.5	23.5	9	3	16	18	19	11.4	11	5	27.0	50
GPA 06G03	6	G3/8	11.2	7	32	15.5	25.7	10.5	4	20	21	22.4	11.4	11	5	44.4	25
GPA 08G01	8	G1/8	13.6	5	22	17.8	25.6	8	2.5	13	14.5	14	14.2	13	5.2	19.4	25
GPA 08G02	8	G1/4	13.6	6	27	17.8	28.1	9	3	16	18	19	14.2	13	6.8	29.8	25
GPA 08G03	8	G3/8	13.6	7	32	17.8	29.8	10.5	4	20	21	22.4	14.2	13	7	46.1	25
GPA 08G04	8	G1/2	13.6	8.5	35.5	17.8	32.1	11	5	24	22	27	14.2	13	7	76.4	20
GPA 10G02	10	G1/4	16.3	6	27	19.4	27.5	9.7	3	16	18	19	17	16	7.3	31.0	20
GPA 10G03	10	G3/8	16.3	7	32	19.4	29.6	10.5	4	20	21	22.4	17	16	9	50.0	20
GPA 10G04	10	G1/2	16.3	8.5	35.5	19.4	31.5	11	5	24	22	27	17	16	9	79.2	10
GPA 12G03	12	G3/8	19.7	7	32	22.4	32.4	11.9	4	20	21	22.4	20	19.5	8.7	58.2	10
GPA 12G04	12	G1/2	19.7	8.5	35.5	22.4	34.9	11.9	5	24	22	27	20	19.5	10	87.6	10

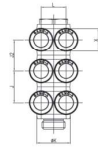
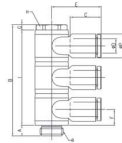
MODEL [ØD-T] Tube (Metric) - Thread (G)

MODEL	ØD	R	ØP	A	B	C	E	F	G	H	I	J	ØK	L	X	Orifice (mm)	W (g)	Qty. / Pkbox
GPA 04G01(2)	4	G1/8	9	5	36.5	14.5	20.6	7.3	2.5	13	29	14.5	14	9.3	8.6	3.2	24.9	25
GPA 04G02(2)	4	G1/4	9	6	45	14.5	22.6	9	3	16	36	18	19	9.3	8.6	3.2	41.4	25
GPA 04G03(2)	4	G3/8	9	7	53	14.5	24.6	10.5	4	20	42	21	22.4	9.3	8.6	3.2	67.0	25
GPA 06G01(2)	6	G1/8	11.2	5	36.5	15.5	22	7.3	2.5	13	29	14.5	14	11.4	11	5	28.2	25
GPA 06G02(2)	6	G1/4	11.2	6	45	15.5	23.5	9	3	16	36	18	19	11.4	11	5	44.4	25
GPA 06G03(2)	6	G3/8	11.2	7	53	15.5	25.7	10.5	4	20	42	21	22.4	11.4	11	5	70.1	25
GPA 08G01(2)	8	G1/8	13.6	5	36.5	17.8	25.6	8	2.5	13	29	14.5	14	14.2	13	5.2	33.8	20
GPA 08G02(2)	8	G1/4	13.6	6	45	17.8	28.1	9	3	16	36	18	19	14.2	13	6.8	50.0	20
GPA 08G03(2)	8	G3/8	13.6	7	53	17.8	29.8	10.5	4	20	42	21	22.4	14.2	13	7	73.5	20
GPA 08G04(2)	8	G1/2	13.6	8.5	57.5	17.8	32.1	11	5	24	44	22	27	14.2	13	7	117.4	20
GPA 10G02(2)	10	G1/4	16.3	6	45	19.4	27.5	9.7	3	16	36	18	19	17	16	7.3	52.3	12
GPA 10G03(2)	10	G3/8	16.3	7	53	19.4	29.6	10.5	4	20	42	21	22.4	17	16	9	81.2	12
GPA 10G04(2)	10	G1/2	16.3	8.5	57.5	19.4	31.5	11	5	24	44	22	27	17	16	9	123.0	12
GPA 12G03(2)	12	G3/8	19.7	7	53	22.4	32.4	11.9	4	20	42	21	22.4	20	19.5	8.7	97.7	6
GPA 12G04(2)	12	G1/2	19.7	8.5	57.5	22.4	34.9	11.9	5	24	44	22	27	20	19.5	10	139.7	6

**GPA(D2)-G**  
Double Branch A



**GPA(D3)-G**  
Triple Branch A



MODEL [ØD-T] Tube (Metric) - Thread (G)

MODEL	ØD	R	ØP	A	B	C	E	F	G	H	I	J	J2	ØK	L	X	Orifice (mm)	W (g)	Qty. / Pkbox
GPA 04G01(3)	4	G1/8	9	5	51	14.5	20.6	7.3	2.5	13	43.5	14.5	14.5	14	9.3	8.6	3.2	34.8	25
GPA 04G02(3)	4	G1/4	9	6	63	14.5	22.6	9	3	16	54	18	18	19	9.3	8.6	3.2	57.4	25
GPA 04G03(3)	4	G3/8	9	7	74	14.5	24.6	10.5	4	20	63	21	21	22.4	9.3	8.6	3.2	91.3	25
GPA 06G01(3)	6	G1/8	11.2	5	51	15.5	22	7.3	2.5	13	43.5	14.5	14.5	14	11.4	11	5	39.8	20
GPA 06G02(3)	6	G1/4	11.2	6	63	15.5	23.5	9	3	16	54	18	18	19	11.4	11	5	61.9	20
GPA 06G03(3)	6	G3/8	11.2	7	74	15.5	25.7	10.5	4	20	63	21	21	22.4	11.4	11	5	95.9	20
GPA 08G01(3)	8	G1/8	13.6	5	51	17.8	25.6	8	2.5	13	43.5	14.5	14.5	14	14.2	13	5.2	48.1	16
GPA 08G02(3)	8	G1/4	13.6	6	63	17.8	28.1	9	3	16	54	18	18	19	14.2	13	6.8	70.3	16
GPA 08G03(3)	8	G3/8	13.6	7	74	17.8	29.8	10.5	4	20	63	21	21	22.4	14.2	13	7	101.0	12
GPA 08G04(3)	8	G1/2	13.6	8.5	79.5	17.8	32.1	11	5	24	66	22	22	27	14.2	13	7	158.2	12
GPA 10G02(3)	10	G1/4	16.3	6	63	19.4	27.5	9.7	3	16	54	18	18	19	17	16	7.3	73.7	9
GPA 10G03(3)	10	G3/8	16.3	7	74	19.4	29.6	10.5	4	20	63	21	21	22.4	17	16	9	112.6	9
GPA 10G04(3)	10	G1/2	16.3	8.5	79.5	19.4	31.5	11	5	24	66	22	22	27	17	16	9	166.6	9
GPA 12G03(3)	12	G3/8	19.7	7	74	22.4	32.4	11.9	4	20	63	21	21	22.4	20	19.5	8.7	137.3	6
GPA 12G04(3)	12	G1/2	19.7	8.5	79.5	22.4	34.9	11.9	5	24	66	22	22	27	20	19.5	10	191.7	6

MODEL [ØD-T] Tube (Metric) - Thread (G)

MODEL	ØD	R	Rc	ØP	A1	A2	B	C	E	F	G	H	I	ØJ	K	X	Orifice (mm)	W (g)	Qty. / Pkbox
GPAF 04-G01	4	R1/8	G1/8	9	8	9	34.5	14.5	20.6	7.3	10.5	13	14.5	14	9.3	8.6	3.2	22.3	50
GPAF 04-G02	4	R1/4	G1/4	9	11	12	44.5	14.5	22.6	9	13.5	17	18	19	9.3	8.6	3.2	42.7	50
GPAF 04-G03	4	R3/8	G3/8	9	12	13	50.8	14.5	24.6	10.5	15	21	21	22.4	9.3	8.6	3.2	67.3	25
GPAF 06-G01	6	R1/8	G1/8	11.2	8	9	34.5	15.5	22	7.3	10.5	13	14.5	14	11.4	11	5	24.0	50
GPAF 06-G02	6	R1/4	G1/4	11.2	11	12	44.5	15.5	23.5	9	13.5	17	18	19	11.4	11	5	44.2	50
GPAF 06-G03	6	R3/8	G3/8	11.2	12	13	50.8	15.5	25.7	10.5	15	21	21	22.4	11.4	11	5	68.9	25
GPAF 08-G01	8	R1/8	G1/8	13.6	8	9	34.5	17.8	25.6	8	10.5	13	14.5	14	14.2	13	5.2	26.8	25
GPAF 08-G02	8	R1/4	G1/4	13.6	11	12	44.5	17.8	28.1	9	13.5	17	18	19	14.2	13	6.8	47.0	25
GPAF 08-G03	8	R3/8	G3/8	13.6	12	13	50.8	17.8	29.8	10.5	15	21	21	22.4	14.2	13	7	70.5	25
GPAF 08-G04	8	R1/2	G1/2	13.6	15	16	58.8	17.8	32.1	11	19	24	22	27	14.2	13	7	107.6	20
GPAF 10-G02	10	R1/4	G1/4	16.3	11	12	44.5	19.4	27.5	9.7	13.5	17	18	19	17	16	7.3	48.3	15
GPAF 10-G03	10	R3/8	G3/8	16.3	12	13	50.8	19.4	29.6	10.5	15	21	21	22.4	17	16	9	74.5	15
GPAF 10-G04	10	R1/2	G1/2	16.3	15	16	58.8	19.4	31.5	11	19	24	22	27	17	16	9	110.5	15
GPAF 12-G03	12	R3/8	G3/8	19.7	12	13	50.8	22.4	32.4	11.9	15	21	21	22.4	20	19.5	8.7	82.8	10
GPAF 12-G04	12	R1/2	G1/2	19.7	15	16	58.8	22.4	34.9	11.9	19	24	22	27	20	19.5	10	118.9	10

**GPAF-G**  
Dual Female Banjo

